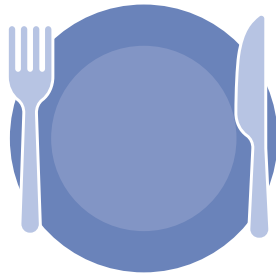


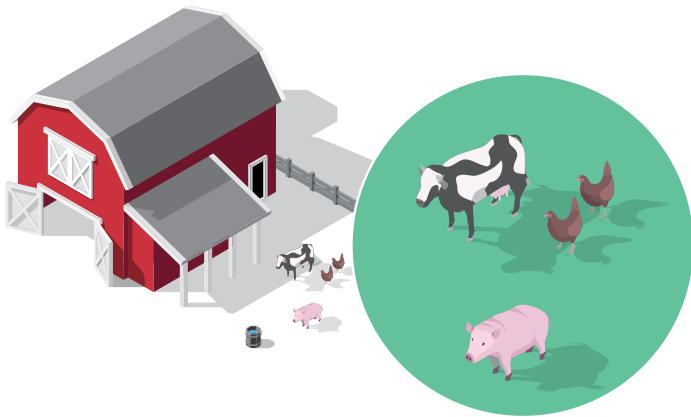
A Complex Web: Everything is Connected

Food, Farms, & Animals

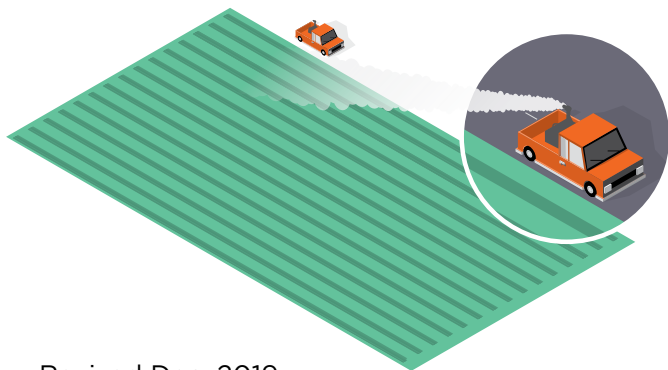
Animals, like people, carry germs in their gut, including antibiotic-resistant germs. The U.S. food supply is among the safest in the world, but these germs can get into the food supply and people can get sick.



- ◀ When animals are slaughtered and processed for food, germs in the animal gut, including resistant germs, can contaminate meat or other animal products.
- ◀ People can get sick from eating or handling contaminated food or from contact with animals or their surroundings.



- ◀ Antibiotics save lives. However, any time antibiotics are used, the drugs can contribute to the development of antibiotic resistance.
- ◀ Animal waste (poop) can carry traces of previously consumed antibiotics and antibiotic-resistant germs. Sometimes animal waste is used as fertilizer on farms.
- ◀ Food, such as fruits and vegetables, can become contaminated through contact with soil or water containing waste from animals.



- ◀ Antibiotics and antifungals are sometimes applied as pesticides to manage crop disease. This may speed up the development and spread of resistant germs by contaminating surrounding soil and water.
- ◀ Stormwater and irrigation water from farmland can contaminate nearby lakes and rivers.

Revised Dec. 2019



U.S. Department of
Health and Human Services
Centers for Disease
Control and Prevention