

Notifiable Diseases and Mortality Tables

TABLE I. Provisional cases of selected* infrequently reported notifiable diseases (<1,000 cases reported during the preceding year) — United States, week ending August 19, 2017 (33rd week)[†] (Export data)

Disease	Current week	Cum 2017	5-year weekly average [§]	Total cases reported for previous years					States reporting cases during current week (No.)
				2016	2015	2014	2013	2012	
Anthrax	—	—	—	—	—	—	—	—	
Arboviral diseases neuroinvasive and nonneuroinvasive ^{¶,**} :									
Chikungunya virus disease	—	29	8	246	896	NN	NN	NN	
Eastern equine encephalitis virus disease	—	—	1	7	6	8	8	15	
Jamestown Canyon virus disease	—	21	0	15	11	11	22	2	
La Crosse virus disease	2	16	2	35	55	80	85	78	TN (2)
Powassan virus disease	—	18	0	22	7	8	12	7	
St. Louis encephalitis virus disease	—	1	0	8	23	10	1	3	
Western equine encephalitis virus disease	—	—	—	—	—	—	—	—	
Botulism, total	—	88	3	201	195	161	152	168	
foodborne	—	14	1	31	37	15	4	27	
infant	—	65	2	144	138	127	136	123	
other (wound and unspecified)	—	9	0	26	20	19	12	18	
Brucellosis	—	70	3	127	126	92	99	114	
Chancroid	—	6	0	7	11	—	—	15	
Cholera	—	1	0	2	5	5	14	17	
Cyclosporiasis**	24	624	28	535	645	388	784	123	NYC (2), OH (8), MO (1), AR (2), TX (3), WY (1), AZ (1), WA (6)
Diphtheria	—	—	—	—	—	1	—	1	
<i>Haemophilus influenzae</i> invasive disease (age <5 yrs) ^{††} :									
serotype b	—	15	1	30	29	40	31	30	
nontypeable	—	86	2	196	175	128	141	115	
non-b serotype	2	89	1	159	135	266	233	263	TX (1), AK (1)
unknown serotype	2	156	2	187	167	39	34	37	FL (1), AZ (1)
Hansen's disease**	—	41	2	78	89	88	81	82	
Hantavirus**:									
Hantavirus infection (non-HPS)	—	—	0	2	3	NN	NN	NN	
Hantavirus Pulmonary Syndrome (HPS)	—	5	0	14	21	32	21	30	
Hemolytic uremic syndrome, postdiarrheal**	2	155	9	307	274	250	329	274	NYC (1), MO (1)
Hepatitis B, perinatal virus infection ^{§§}	—	13	1	35	37	47	48	40	
Influenza-associated pediatric mortality ^{**¶¶}	—	108	1	83	130	141	160	52	
Leptospirosis**	1	33	1	78	40	38	NN	NN	GA (1)
Listeriosis	8	380	23	786	768	769	735	727	NY (5), MO (1), VA (1), FL (1)
Measles***	—	120	2	85	188	667	187	55	
Meningococcal disease (<i>Neisseria meningitidis</i>) ^{†††} :									
serogroup ACWY	—	41	2	126	120	123	142	161	
serogroup B	—	42	1	86	111	89	99	110	
other serogroup	—	10	0	21	21	25	17	20	
unknown serogroup	1	120	2	142	120	196	298	260	NY (1)
Novel influenza A virus infections ^{§§§}	—	19	13	23	7	3	21	313	
Plague	—	1	0	—	16	10	4	4	
Poliomyelitis, paralytic	—	—	—	—	—	—	1	—	
Polio virus infection, nonparalytic**	—	—	—	—	—	—	—	—	
Psittacosis**	—	3	0	12	4	8	6	2	
Q fever, total**	2	97	4	164	156	168	170	135	
acute	1	79	3	132	122	132	137	113	OR (1)
chronic	1	18	1	32	34	36	33	22	TN (1)
Rabies, human	—	—	—	—	2	1	2	1	
SARS-CoV	—	—	—	—	—	—	—	—	
Smallpox	—	—	—	—	—	—	—	—	
Streptococcal toxic shock syndrome**	—	215	3	283	335	259	224	194	
Syphilis, congenital ^{¶¶¶}	—	288	9	628	493	458	348	322	
Toxic shock syndrome (other than streptococcal)**	—	14	1	40	64	59	71	65	
Trichinellosis**	—	6	0	26	14	14	22	18	
Tularemia	1	108	7	230	314	180	203	149	OH (1)
Typhoid fever (caused by <i>Salmonella typhi</i>)	—	172	9	376	367	349	338	354	
Vancomycin-intermediate <i>Staphylococcus aureus</i> **	—	48	3	108	183	212	248	134	
Vancomycin-resistant <i>Staphylococcus aureus</i> **	—	—	0	—	3	—	—	2	

See Table I footnotes on next page.

TABLE I. (Continued) Provisional cases of selected* infrequently reported notifiable diseases (<1,000 cases reported during the preceding year) — United States, week ending August 19, 2017 (33rd week)[†] (Export data)

Disease	Current week	Cum 2017	5-year weekly average [§]	Total cases reported for previous years					States reporting cases during current week (No.)
				2016	2015	2014	2013	2012	
Viral hemorrhagic fevers****.									
Crimean-Congo hemorrhagic fever	—	—	—	—	—	NP	NP	NP	
Ebola hemorrhagic fever	—	—	—	—	—	4	NP	NP	
Guanarito hemorrhagic fever	—	—	—	—	—	NP	NP	NP	
Junin hemorrhagic fever	—	—	—	—	—	NP	NP	NP	
Lassa fever	—	—	—	—	1	1	NP	NP	
Lujo virus	—	—	—	—	—	NP	NP	NP	
Machupo hemorrhagic fever	—	—	—	—	—	NP	NP	NP	
Marburg fever	—	—	—	—	—	NP	NP	NP	
Sabia-associated hemorrhagic fever	—	—	—	—	—	NP	NP	NP	
Yellow fever	—	—	—	—	—	—	—	—	
Zika virus disease, non-congenital ^{†††}	—	262	79	5,109	NN	NN	NN	NN	

—: No reported cases. N: Not reportable. NA: Not available. NN: Not Nationally Notifiable. NP: Nationally notifiable but not published. Cum: Cumulative year-to-date counts.

* Case counts for reporting years 2016 and 2017 are provisional and subject to change. Data for years 2012 through 2015 are finalized. For further information on interpretation of these data, see <http://www.cdc.gov/nndss/document/ProvisionalNationalNotifiableDiseasesSurveillanceData20100927.pdf>.

[†] This table does not include cases from the U.S. territories. Three low incidence conditions, rubella, rubella congenital, and tetanus, are in Table II to facilitate case count verification with reporting jurisdictions.

[§] Calculated by summing the incidence counts for the current week, the 2 weeks preceding the current week, and the 2 weeks following the current week, for a total of 5 preceding years. Additional information is available at <http://www.cdc.gov/nndss/document/5yearweeklyaverage.pdf>.

[¶] Updated weekly reports from the Division of Vector-Borne Diseases, National Center for Emerging and Zoonotic Infectious Diseases (ArboNET Surveillance). Data for West Nile virus are available in Table II.

** Not reportable in all jurisdictions. Data from states where the condition is not reportable are excluded from this table, except for the arboviral diseases and influenza-associated pediatric mortality. Reporting exceptions are available at <http://www.cdc.gov/nndss/downloads.html>.

^{††} Data for *Haemophilus influenzae* (all ages, all serotypes) are available in Table II.

^{§§} In 2016, the nationally notifiable condition 'Hepatitis B Perinatal Infection' was renamed to 'Perinatal Hepatitis B Virus Infection' and reflects updates in the 2016 CSTE position statement for Perinatal Hepatitis B Virus Infection.

^{¶¶} Updated weekly from reports to the Influenza Division, National Center for Immunization and Respiratory Diseases. Since October 2, 2016, 104 influenza-associated pediatric deaths occurring during the 2016-17 season have been reported.

*** No measles cases were reported for the current week.

^{†††} Data for meningococcal disease (all serogroups) are available in Table II.

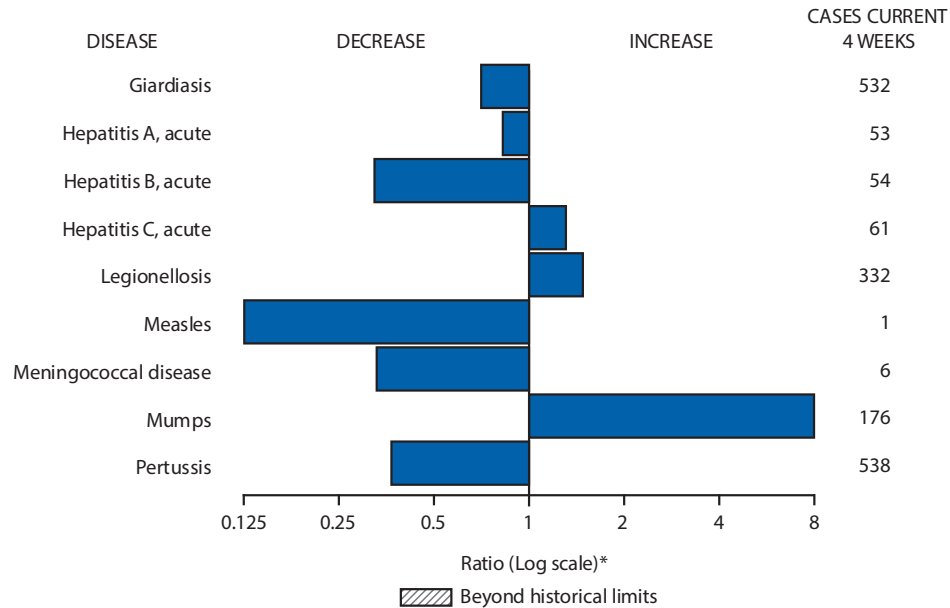
^{§§§} Novel influenza A virus infections are human infections with influenza A viruses that are different from currently circulating human seasonal influenza viruses. With the exception of one avian lineage influenza A (H7N2) virus, all novel influenza A virus infections reported to CDC since 2012 have been variant influenza viruses. Total case counts are provided by the Influenza Division, National Center for Immunization and Respiratory Diseases (NCIRD).

^{¶¶¶} Updated weekly from reports to the Division of STD Prevention, National Center for HIV/AIDS, Viral Hepatitis, STD, and TB Prevention.

**** Prior to 2015, CDC's National Notifiable Diseases Surveillance System (NNDSS) did not receive electronic data about incident cases of specific viral hemorrhagic fevers; instead data were collected in aggregate as "viral hemorrhagic fevers". Beginning in 2015, NNDSS has been updated to receive data for each of the viral hemorrhagic fevers listed below. In addition to the four cases of Ebola diagnosed in the United States to date in 2014, six residents of the United States have been medically evacuated to the United States for care after developing Ebola in West Africa. Ten of the 11 VHF cases reported for 2014 are confirmed as Ebola and one as Lassa fever.

^{††††} The Council of State and Territorial Epidemiologists approved position statement 16-ID-01 in June 2016, which modifies the previous case definition and naming convention from "Zika virus congenital infection" to "Zika virus disease, non-congenital".

FIGURE I. Selected notifiable disease reports, United States, comparison of provisional 4-week totals August 19, 2017, with historical data



* Ratio of current 4-week total to mean of 15 4-week totals (from previous, comparable, and subsequent 4-week periods for the past 5 years). The point where the hatched area begins is based on the mean and two standard deviations of these 4-week totals.

National Notifiable Diseases Data Team
 Yvette D. Dominique
 Deborah A. Adams Willie J. Anderson
 Diana Harris Onweh Alan W. Schley

Data presented by the National Notifiable Diseases Data Team in the weekly MMWR are provisional, based on weekly reports to CDC by state health departments. Readers who have difficulty accessing this PDF file may access the HTML file at <https://www.cdc.gov/mmwr/volumes/66/wr/mm6633md.htm>. Address all inquiries about the MMWR Series, including material to be considered for publication, to Editor, MMWR Series, Mailstop E-90, CDC, 1600 Clifton Rd., N.E., Atlanta, GA 30329-4027 or to mmwrq@cdc.gov.

Morbidity and Mortality Weekly Report

TABLE II. Provisional cases of selected notifiable diseases (≥1,000 cases reported during the preceding year), and selected* low frequency diseases, United States and U.S. territories, weeks ending August 19, 2017, and August 20, 2016 (33rd week)[†] (Export data)

Reporting area	Babesiosis					Campylobacteriosis				
	Current week	Previous 52 weeks		Cum 2017	Cum 2016	Current week	Previous 52 weeks		Cum 2017	Cum 2016
		Med	Max				Med	Max		
United States	35	14	125	929	1,365	618	1,098	3,079	36,083	37,128
New England	5	7	61	408	886	4	49	102	1,642	1,897
Connecticut	—	1	14	15	253	2	10	28	384	443
Maine	5	1	10	67	60	1	3	12	107	167
Massachusetts	—	3	51	264	431	—	24	50	773	891
New Hampshire	—	0	6	32	11	1	5	9	163	134
Rhode Island	—	0	8	24	124	—	4	13	121	134
Vermont	—	0	3	6	7	—	3	10	94	128
Mid. Atlantic	30	5	119	470	370	138	142	225	4,813	4,896
New Jersey	—	1	22	104	147	—	31	61	891	1,249
New York (Upstate)	25	3	118	306	181	63	33	84	1,132	1,084
New York City	5	0	13	60	42	52	36	59	1,308	1,059
Pennsylvania	N	0	0	N	N	23	44	89	1,482	1,504
E.N. Central	—	1	6	39	50	56	145	224	4,749	5,267
Illinois	—	0	0	—	2	—	38	62	1,196	1,295
Indiana	—	0	0	—	—	—	17	29	473	679
Michigan	—	0	1	1	—	—	31	54	842	982
Ohio	—	0	1	2	—	46	37	65	1,238	1,254
Wisconsin	—	1	5	36	48	10	29	55	1,000	1,057
W.N. Central	—	0	2	2	44	45	91	164	2,656	4,045
Iowa	—	0	1	2	—	20	18	44	675	708
Kansas	N	0	0	N	N	—	11	32	304	509
Minnesota	—	0	2	—	42	—	0	45	—	1,070
Missouri	N	0	0	N	N	14	26	45	882	881
Nebraska	—	0	0	—	1	11	10	23	369	412
North Dakota	—	0	0	—	1	—	4	13	170	143
South Dakota	—	0	0	—	—	—	7	16	256	322
S. Atlantic	—	0	1	5	7	24	168	245	5,517	5,921
Delaware	—	0	1	4	1	—	3	10	109	105
District of Columbia	—	0	1	—	1	—	0	4	6	43
Florida	N	0	0	N	N	—	73	111	2,551	2,121
Georgia	N	0	0	N	N	2	19	36	713	651
Maryland	—	0	1	1	4	—	14	25	375	540
North Carolina	N	0	0	N	N	—	25	45	735	964
South Carolina	—	0	1	—	1	—	7	16	161	243
Virginia	N	0	0	N	N	21	26	69	823	997
West Virginia	—	0	0	—	—	1	3	15	44	257
E.S. Central	—	0	1	2	1	17	51	77	1,595	1,501
Alabama	—	0	1	1	—	—	12	30	434	444
Kentucky	—	0	0	—	1	9	15	27	408	446
Mississippi	N	0	0	N	N	4	8	15	306	137
Tennessee	—	0	1	1	—	4	14	25	447	474
W.S. Central	—	0	1	—	3	154	130	293	3,959	4,186
Arkansas	—	0	0	—	1	13	11	27	403	345
Louisiana	—	0	0	—	2	9	7	23	138	356
Oklahoma	N	0	0	N	N	76	16	60	412	682
Texas	—	0	1	—	—	56	95	241	3,006	2,803
Mountain	—	0	0	—	1	58	89	165	3,086	2,971
Arizona	—	0	0	—	—	11	23	50	835	815
Colorado	N	0	0	N	N	29	18	45	705	728
Idaho	N	0	0	N	N	12	10	23	347	299
Montana	—	0	0	—	1	4	7	16	261	258
Nevada	N	0	0	N	N	—	3	9	89	138
New Mexico	N	0	0	N	N	2	12	27	389	280
Utah	—	0	0	—	—	—	10	21	335	342
Wyoming	—	0	0	—	—	—	3	9	125	111
Pacific	—	0	1	3	3	122	201	2,060	8,066	6,444
Alaska	N	0	0	N	N	2	2	7	60	70
California	—	0	1	1	2	87	169	266	6,022	5,381
Hawaii	N	0	0	N	N	—	9	36	445	350
Oregon	—	0	1	2	1	22	18	40	646	643
Washington	—	0	0	—	—	11	6	1,911	893	—
Territories										
American Samoa	U	0	0	U	U	—	0	0	—	—
C.N.M.I.	—	—	—	—	—	—	—	—	—	—
Guam	—	0	0	—	—	—	0	3	—	1
Puerto Rico	N	0	0	N	N	—	0	2	14	31
U.S. Virgin Islands	N	0	0	N	N	—	0	0	—	—

C.N.M.I.: Commonwealth of Northern Mariana Islands.

U: Unavailable. —: No reported cases. N: Not reportable. NN: Not Nationally Notifiable. NP: Nationally notifiable but not published. Cum: Cumulative year-to-date counts. Med: Median. Max: Maximum.

* Three low incidence conditions, rubella, rubella congenital, and tetanus, are in Table II to facilitate case count verification with reporting jurisdictions.

[†] Case counts for reporting years 2016 and 2017 are provisional and subject to change. For further information on interpretation of these data, see <http://www.cdc.gov/nndss/document/ProvisionalNationalNotifiableDiseasesSurveillanceData20100927.pdf>. Data for tuberculosis are displayed in Table III, which appears quarterly.

Morbidity and Mortality Weekly Report

TABLE II. (Continued) Provisional cases of selected notifiable diseases (≥1,000 cases reported during the preceding year), and selected* low frequency diseases, United States and U.S. territories, weeks ending August 19, 2017, and August 20, 2016 (33rd week)† (Export data)

Reporting area	<i>Chlamydia trachomatis</i> infection					Coccidioidomycosis				
	Current week	Previous 52 weeks		Cum 2017	Cum 2016	Current week	Previous 52 weeks		Cum 2017	Cum 2016
		Med	Max				Med	Max		
United States	17,421	31,117	37,915	983,256	1,003,198	164	207	363	6,146	6,384
New England	330	1,061	1,524	32,753	33,433	—	0	1	1	2
Connecticut	6	252	459	5,808	8,321	N	0	0	N	N
Maine	—	87	153	2,704	2,549	N	0	0	N	N
Massachusetts	—	556	617	17,078	16,598	N	0	0	N	N
New Hampshire	178	74	201	3,517	2,431	—	0	1	1	2
Rhode Island	146	82	496	2,977	2,433	—	0	1	—	—
Vermont	—	23	102	669	1,101	N	0	0	1,101	N
Mid. Atlantic	2,997	4,087	5,094	135,351	125,009	—	0	0	—	—
New Jersey	283	685	797	20,933	21,688	N	0	0	N	N
New York (Upstate)	992	853	2,358	27,001	25,385	N	0	0	N	N
New York City	836	1,392	1,595	45,285	41,735	N	0	0	N	N
Pennsylvania	886	1,106	2,005	42,132	36,201	N	0	0	N	N
E.N. Central	1,495	4,278	5,214	130,731	149,693	—	1	4	27	51
Illinois	51	1,031	1,501	30,171	46,343	N	0	0	N	N
Indiana	295	635	974	21,038	19,613	—	0	0	—	1
Michigan	231	847	1,095	25,756	28,577	—	0	2	11	27
Ohio	564	1,175	1,275	36,717	38,311	—	0	4	15	13
Wisconsin	354	526	641	17,049	16,849	—	0	2	1	10
W.N. Central	483	1,897	2,128	58,265	59,351	—	2	5	64	77
Iowa	67	261	302	8,052	8,050	N	0	0	N	N
Kansas	56	257	295	8,173	7,528	N	0	0	N	N
Minnesota	4	445	524	12,918	14,241	—	1	4	42	51
Missouri	282	634	750	20,034	19,371	—	0	2	10	16
Nebraska	66	160	274	4,959	5,168	—	0	2	9	4
North Dakota	8	59	77	1,799	2,243	—	0	1	3	6
South Dakota	—	82	120	2,330	2,750	N	0	0	N	N
S. Atlantic	4,052	6,310	11,499	205,466	209,748	—	0	2	4	6
Delaware	113	103	197	3,430	3,108	—	0	1	—	1
District of Columbia	113	161	426	5,869	4,645	—	0	0	—	—
Florida	1,228	1,933	2,771	62,850	60,091	N	0	0	N	N
Georgia	463	1,192	1,433	37,589	40,644	N	0	0	N	N
Maryland	734	536	1,343	16,802	17,295	—	0	2	4	5
North Carolina	—	1,146	1,361	29,702	36,514	N	0	0	N	N
South Carolina	451	581	758	19,277	18,526	N	0	0	N	N
Virginia	874	741	4,710	27,300	25,925	N	0	0	N	N
West Virginia	76	83	130	2,647	3,000	N	0	0	N	N
E.S. Central	562	1,805	2,485	55,188	60,696	—	0	1	2	—
Alabama	—	480	633	14,677	18,696	N	0	0	N	N
Kentucky	—	384	714	11,445	9,588	—	0	1	2	—
Mississippi	562	328	711	9,710	12,284	N	0	0	N	N
Tennessee	—	660	917	19,356	20,128	N	0	0	N	N
W.S. Central	3,559	4,222	5,406	134,642	133,652	—	0	1	2	12
Arkansas	273	248	549	6,997	9,831	—	0	1	1	1
Louisiana	342	703	1,684	23,260	18,648	—	0	1	1	11
Oklahoma	70	334	472	9,815	13,800	N	0	0	N	N
Texas	2,874	2,869	4,069	94,570	91,373	N	0	0	N	N
Mountain	886	2,096	2,714	66,116	68,382	158	114	159	3,794	3,935
Arizona	352	682	1,480	22,530	20,823	158	110	155	3,675	3,842
Colorado	297	474	790	15,126	17,060	N	0	0	N	N
Idaho	—	108	166	2,681	3,715	N	0	0	N	N
Montana	49	87	158	2,834	2,735	—	0	3	13	7
Nevada	2	271	433	7,723	8,692	—	2	6	66	46
New Mexico	69	253	391	7,845	8,122	—	0	2	7	18
Utah	89	190	231	6,230	5,967	—	1	4	31	21
Wyoming	28	35	59	1,147	1,268	—	0	1	2	1
Pacific	3,057	5,128	5,737	164,744	163,234	6	84	224	2,252	2,301
Alaska	—	112	142	3,380	3,563	N	0	0	N	N
California	2,311	3,989	4,444	130,461	124,802	6	84	224	2,247	2,293
Hawaii	—	130	180	3,931	4,357	N	0	0	N	N
Oregon	342	347	545	11,588	10,889	—	0	2	5	8
Washington	404	503	819	15,384	19,623	N	0	0	N	N
Territories										
American Samoa	—	0	0	—	—	N	0	0	N	N
C.N.M.I.	—	—	—	—	—	—	—	—	—	—
Guam	—	0	0	—	—	—	0	0	—	—
Puerto Rico	86	124	350	4,640	5,008	N	0	0	N	N
U.S. Virgin Islands	—	6	15	46	432	—	0	0	—	—

C.N.M.I.: Commonwealth of Northern Mariana Islands.

U: Unavailable. —: No reported cases. N: Not reportable. NN: Not Nationally Notifiable. NP: Nationally notifiable but not published. Cum: Cumulative year-to-date counts. Med: Median. Max: Maximum.

* Three low incidence conditions, rubella, rubella congenital, and tetanus, are in Table II to facilitate case count verification with reporting jurisdictions.

† Case counts for reporting years 2016 and 2017 are provisional and subject to change. For further information on interpretation of these data, see <http://www.cdc.gov/nndss/document/ProvisionalNationalNotifiableDiseasesSurveillanceData20100927.pdf>. Data for tuberculosis are displayed in Table III, which appears quarterly.

Morbidity and Mortality Weekly Report

TABLE II. (Continued) Provisional cases of selected notifiable diseases (≥1,000 cases reported during the preceding year), and selected* low frequency diseases, United States and U.S. territories, weeks ending August 19, 2017, and August 20, 2016 (33rd week)[†] (Export data)

Reporting area	Cryptosporidiosis					Dengue Virus Infections									
	Current week	Previous 52 weeks		Cum 2017	Cum 2016	Dengue [§]					Severe Dengue				
		Med	Max			Current week	Med	Max	Cum 2017	Cum 2016	Current week	Med	Max	Cum 2017	Cum 2016
United States	137	160	757	4,739	6,687	1	5	33	100	729	—	0	1	5	8
New England	1	7	24	215	255	—	0	1	1	22	—	0	0	—	—
Connecticut	1	1	6	42	34	—	0	0	—	8	—	0	0	—	—
Maine	—	1	5	32	30	—	0	1	—	1	—	0	0	—	—
Massachusetts	—	3	13	81	123	—	0	1	—	7	—	0	0	—	—
New Hampshire	—	0	8	25	39	—	0	1	—	2	—	0	0	—	—
Rhode Island	—	0	2	11	7	—	0	1	1	2	—	0	0	—	—
Vermont	—	1	11	24	22	—	0	1	—	2	—	0	0	—	—
Mid. Atlantic	17	18	73	525	560	—	1	10	19	152	—	0	1	1	4
New Jersey	—	2	23	46	79	—	0	4	2	37	—	0	1	—	4
New York (Upstate)	5	5	25	154	152	—	0	3	3	28	—	0	0	—	—
New York City	3	4	12	105	80	—	0	5	11	72	—	0	0	—	—
Pennsylvania	9	7	27	220	249	—	0	2	3	15	—	0	1	1	—
E.N. Central	34	35	301	1,056	1,629	—	0	8	17	54	—	0	1	2	1
Illinois	—	5	30	152	211	—	0	4	1	24	—	0	1	2	—
Indiana	—	3	10	88	141	—	0	1	—	6	—	0	0	—	1
Michigan	—	6	20	179	267	—	0	2	2	13	—	0	0	—	—
Ohio	23	11	207	311	534	—	0	2	3	6	—	0	0	—	—
Wisconsin	11	12	55	326	476	—	0	2	11	5	—	0	0	—	—
W.N. Central	20	23	137	673	1,283	—	0	3	3	48	—	0	0	—	—
Iowa	3	9	65	259	410	—	0	1	—	12	—	0	0	—	—
Kansas	—	1	7	38	81	—	0	1	2	4	—	0	0	—	—
Minnesota	—	0	31	—	293	—	0	2	—	18	—	0	0	—	—
Missouri	7	5	23	163	229	—	0	1	—	9	—	0	0	—	—
Nebraska	9	4	16	107	125	—	0	1	1	2	—	0	0	—	—
North Dakota	1	0	3	30	32	—	0	0	—	2	—	0	0	—	—
South Dakota	—	2	7	76	113	—	0	1	—	1	—	0	0	—	—
S. Atlantic	5	24	76	660	978	—	0	8	17	140	—	0	0	—	1
Delaware	1	0	2	8	13	—	0	0	—	2	—	0	0	—	—
District of Columbia	—	0	2	6	9	—	0	1	4	12	—	0	0	—	—
Florida	—	9	31	234	302	—	0	3	6	54	—	0	0	—	—
Georgia	2	7	22	214	208	—	0	1	4	16	—	0	0	—	—
Maryland	—	1	10	26	48	—	0	1	—	9	—	0	0	—	—
North Carolina	—	2	17	51	182	—	0	1	—	12	—	0	0	—	—
South Carolina	—	1	8	24	55	—	0	0	—	12	—	0	0	—	1
Virginia	2	3	15	92	140	—	0	3	3	23	—	0	0	—	—
West Virginia	—	0	7	5	21	—	0	0	—	—	—	0	0	—	—
E.S. Central	2	8	41	233	365	—	0	2	5	10	—	0	0	—	—
Alabama	—	4	25	83	153	—	0	1	—	2	—	0	0	—	—
Kentucky	—	2	7	45	87	—	0	0	—	2	—	0	0	—	—
Mississippi	1	1	5	34	28	—	0	2	2	—	—	0	0	—	—
Tennessee	1	3	10	71	97	—	0	2	3	6	—	0	0	—	—
W.S. Central	31	18	92	496	564	1	0	5	10	30	—	0	1	1	1
Arkansas	—	2	6	56	44	—	0	0	—	3	—	0	0	—	—
Louisiana	—	1	7	12	68	—	0	2	—	3	—	0	0	—	—
Oklahoma	10	2	60	77	106	—	0	1	1	4	—	0	1	1	—
Texas	21	14	33	351	346	1	0	3	9	20	—	0	1	—	1
Mountain	18	13	118	405	615	—	0	2	3	46	—	0	1	1	—
Arizona	2	3	82	72	216	—	0	1	1	12	—	0	0	—	—
Colorado	13	3	14	108	126	—	0	2	1	14	—	0	1	1	—
Idaho	1	1	7	47	71	—	0	1	1	4	—	0	0	—	—
Montana	1	1	6	47	44	—	0	0	—	2	—	0	0	—	—
Nevada	—	0	2	15	9	—	0	1	—	5	—	0	1	—	—
New Mexico	—	1	7	39	39	—	0	0	—	5	—	0	0	—	—
Utah	1	2	23	74	98	—	0	1	—	4	—	0	0	—	—
Wyoming	—	0	3	3	12	—	0	0	—	—	—	0	0	—	—
Pacific	9	15	143	476	438	—	1	11	25	224	—	0	0	—	1
Alaska	—	0	2	5	6	—	0	2	1	4	—	0	0	—	—
California	4	8	24	290	260	—	1	8	12	142	—	0	0	—	—
Hawaii	—	0	3	2	1	—	0	1	4	53	—	0	0	—	—
Oregon	5	4	26	134	171	—	0	1	—	12	—	0	0	—	—
Washington	—	0	131	45	—	—	0	2	8	13	—	0	0	—	1
Territories															
American Samoa	N	0	0	N	N	—	1	16	95	—	—	0	0	—	—
C.N.M.I.	—	—	—	—	—	—	—	—	—	—	—	—	—	—	—
Guam	—	0	0	—	—	—	0	1	—	—	—	0	0	—	—
Puerto Rico	—	0	0	—	1	—	0	3	9	183	—	0	0	—	—
U.S. Virgin Islands	—	0	0	—	—	—	0	1	1	9	—	0	0	—	—

C.N.M.I.: Commonwealth of Northern Mariana Islands.

U: Unavailable. —: No reported cases. N: Not reportable. NN: Not Nationally Notifiable. NP: Nationally notifiable but not published. Cum: Cumulative year-to-date counts. Med: Median. Max: Maximum.

* Three low incidence conditions, rubella, rubella congenital, and tetanus, are in Table II to facilitate case count verification with reporting jurisdictions.

[†] Case counts for reporting years 2016 and 2017 are provisional and subject to change. For further information on interpretation of these data, see <http://www.cdc.gov/nndss/document/ProvisionalNationalNotifiableDiseasesSurveillanceData20100927.pdf>. Data for tuberculosis are displayed in Table III, which appears quarterly.

[§] Includes data for dengue and dengue-like illness.

Morbidity and Mortality Weekly Report

TABLE II. (Continued) Provisional cases of selected notifiable diseases (≥1,000 cases reported during the preceding year), and selected* low frequency diseases, United States and U.S. territories, weeks ending August 19, 2017, and August 20, 2016 (33rd week)[†] (Export data)

Reporting area	Ehrlichiosis and Anaplasmosis [§]														
	<i>Ehrlichia chaffeensis</i>					<i>Anaplasma phagocytophilum</i>					Undetermined				
	Current week	Previous 52 weeks		Cum 2017	Cum 2016	Current week	Previous 52 weeks		Cum 2017	Cum 2016	Current week	Previous 52 weeks		Cum 2017	Cum 2016
	Med	Max				Med	Max				Med	Max			
United States	17	16	139	847	921	48	60	242	2,661	2,916	1	3	11	103	142
New England	1	1	3	23	45	6	25	131	1,229	1,188	—	0	2	9	4
Connecticut	—	0	0	—	1	—	0	8	—	53	N	0	0	N	N
Maine	1	0	1	5	2	6	5	32	331	249	—	0	1	3	3
Massachusetts	—	0	1	8	8	—	9	77	704	621	—	0	1	2	—
New Hampshire	—	0	1	1	6	—	0	1	3	54	—	0	0	—	—
Rhode Island	—	0	2	4	26	—	1	13	24	96	—	0	0	—	—
Vermont	—	0	1	5	2	—	3	23	167	115	—	0	1	4	1
Mid. Atlantic	8	3	65	122	112	41	13	86	920	609	1	0	4	22	27
New Jersey	—	1	8	44	59	—	2	10	86	78	—	0	2	3	4
New York (Upstate)	6	2	64	63	41	34	11	73	773	457	1	0	4	17	12
New York City	2	0	4	15	7	7	0	14	59	35	—	0	1	2	—
Pennsylvania	—	0	1	—	5	—	0	4	2	39	—	0	2	—	11
E.N. Central	—	1	7	47	60	—	6	50	425	464	—	1	7	44	50
Illinois	—	0	3	13	29	—	0	1	3	8	—	0	0	—	—
Indiana	—	0	0	—	—	—	0	0	—	—	—	0	5	18	15
Michigan	—	0	2	1	6	—	0	1	1	5	—	0	0	—	—
Ohio	—	0	2	11	6	—	0	2	4	4	—	0	0	—	—
Wisconsin	—	0	4	22	19	—	6	50	417	447	—	0	5	26	35
W.N. Central	—	4	27	240	234	—	2	32	31	590	—	0	3	9	40
Iowa	—	0	2	8	2	—	0	1	4	4	—	0	1	1	2
Kansas	—	0	4	21	47	—	0	0	—	4	—	0	0	—	1
Minnesota	—	0	1	—	4	—	0	31	—	564	—	0	2	—	28
Missouri	—	3	24	211	176	—	0	3	14	6	—	0	2	6	6
Nebraska	—	0	2	—	3	—	0	0	—	2	—	0	0	—	—
North Dakota	—	0	1	—	2	—	0	3	12	9	—	0	2	2	3
South Dakota	—	0	0	—	—	—	0	1	1	1	—	0	0	—	—
S. Atlantic	2	2	13	125	196	—	1	4	33	39	—	0	1	3	8
Delaware	—	0	3	17	12	—	0	2	6	4	—	0	0	—	1
District of Columbia	—	0	0	—	4	—	0	0	—	2	—	0	0	—	—
Florida	—	0	2	10	18	—	0	2	5	4	—	0	0	—	—
Georgia	—	0	1	1	12	—	0	0	—	—	—	0	1	1	2
Maryland	—	0	4	17	35	—	0	1	4	6	—	0	1	1	1
North Carolina	—	0	4	33	46	—	0	2	9	13	—	0	0	—	—
South Carolina	—	0	0	—	—	—	0	0	—	—	—	0	0	—	1
Virginia	2	1	8	45	64	—	0	2	9	10	—	0	1	1	3
West Virginia	—	0	2	2	5	—	0	0	—	—	—	0	0	—	—
E.S. Central	3	2	14	131	122	1	0	4	17	13	—	0	2	7	9
Alabama	—	0	1	6	7	—	0	1	3	5	—	0	0	—	3
Kentucky	1	1	8	58	36	—	0	1	2	1	—	0	2	3	1
Mississippi	—	0	2	7	8	—	0	0	—	—	—	0	1	2	—
Tennessee	2	1	7	60	71	1	0	4	12	7	—	0	2	2	5
W.S. Central	3	3	67	159	150	—	0	3	4	8	—	0	0	—	1
Arkansas	—	3	13	130	139	—	0	1	3	7	—	0	0	—	—
Louisiana	—	0	1	—	1	—	0	0	—	—	—	0	0	—	—
Oklahoma	3	0	60	19	1	—	0	3	—	—	—	0	0	—	—
Texas	—	0	2	10	9	—	0	1	1	1	—	0	0	—	1
Mountain	—	0	0	—	1	—	0	1	2	—	—	0	1	3	2
Arizona	—	0	0	—	—	—	0	0	—	—	—	0	1	3	2
Colorado	N	0	0	N	N	N	0	0	N	N	N	0	0	N	N
Idaho	N	0	0	N	N	N	0	0	N	N	N	0	0	N	N
Montana	—	0	0	—	1	—	0	1	1	—	—	0	0	—	—
Nevada	—	0	0	—	—	—	0	0	—	—	—	0	0	—	—
New Mexico	N	0	0	N	N	N	0	0	N	N	N	0	0	N	N
Utah	—	0	0	—	—	—	0	1	1	—	—	0	0	—	—
Wyoming	—	0	0	—	—	—	0	1	—	—	—	0	0	—	—
Pacific	—	0	1	—	1	—	0	2	—	5	—	0	4	6	1
Alaska	N	0	0	N	N	N	0	0	N	N	N	0	0	N	N
California	—	0	0	—	—	—	0	0	—	5	—	0	4	6	1
Hawaii	N	0	0	N	N	N	0	0	N	N	N	0	0	N	N
Oregon	—	0	1	—	1	—	0	2	—	—	—	0	0	—	—
Washington	—	0	0	—	—	—	0	0	—	—	—	0	0	—	—
Territories															
American Samoa	N	0	0	N	N	N	0	0	N	N	N	0	0	N	N
C.N.M.I.	—	—	—	—	—	—	—	—	—	—	—	—	—	—	—
Guam	N	0	0	N	N	N	0	0	N	N	N	0	0	N	N
Puerto Rico	N	0	0	N	N	N	0	0	N	N	N	0	0	N	N
U.S. Virgin Islands	—	0	0	—	—	—	0	0	—	—	—	0	0	—	—

C.N.M.I.: Commonwealth of Northern Mariana Islands.

U: Unavailable. —: No reported cases. N: Not reportable. NN: Not Nationally Notifiable. NP: Nationally notifiable but not published. Cum: Cumulative year-to-date counts. Med: Median. Max: Maximum.

* Three low incidence conditions, rubella, rubella congenital, and tetanus, are in Table II to facilitate case count verification with reporting jurisdictions.

† Case counts for reporting years 2016 and 2017 are provisional and subject to change. For further information on interpretation of these data, see

<http://wwwn.cdc.gov/ndds/document/ProvisionalNationallyNotifiableDiseasesSurveillanceData20100927.pdf>. Data for tuberculosis are displayed in Table III, which appears quarterly.

§ Cumulative total *E. ewingii* cases reported for year 2017 = 26, and 22 cases reported for 2016.

TABLE II. (Continued) Provisional cases of selected notifiable diseases ($\geq 1,000$ cases reported during the preceding year), and selected* low frequency diseases, United States and U.S. territories, weeks ending August 19, 2017, and August 20, 2016 (33rd week)[†] (Export data)

Reporting area	Giardiasis					Gonorrhea					<i>Haemophilus influenzae</i> , invasive [§] (all ages, all serotypes)				
	Current week	Previous 52 weeks		Cum 2017	Cum 2016	Current week	Previous 52 weeks		Cum 2017	Cum 2016	Current week	Previous 52 weeks		Cum 2017	Cum 2016
		Med	Max				Med	Max				Med	Max		
United States	169	259	983	7,877	9,269	5,667	9,651	12,294	308,777	282,329	29	97	215	3,067	3,124
New England	2	19	36	531	709	39	221	440	7,112	5,162	—	5	17	172	176
Connecticut	—	4	11	118	157	5	64	130	1,719	1,435	—	1	4	38	40
Maine	1	2	8	56	78	—	8	32	290	300	—	0	2	18	20
Massachusetts	—	10	21	278	363	—	123	186	4,217	2,777	—	2	10	83	93
New Hampshire	1	1	5	56	72	3	11	24	334	234	—	0	2	15	12
Rhode Island	—	1	9	23	39	31	9	213	481	330	—	0	12	10	4
Vermont	N	0	0	N	N	—	2	10	71	86	—	0	2	8	7
Mid. Atlantic	56	51	98	1,491	1,735	765	1,130	1,358	37,456	30,960	9	14	29	490	478
New Jersey	—	6	17	160	283	70	171	222	5,473	5,019	—	3	7	86	89
New York (Upstate)	27	15	42	466	546	202	199	531	6,316	5,682	3	4	15	168	148
New York City	20	18	34	574	562	287	432	518	14,562	11,313	3	1	6	66	72
Pennsylvania	9	9	36	291	344	206	305	535	11,105	8,946	3	5	11	170	169
E.N. Central	31	28	150	824	1,016	521	1,336	1,603	40,846	42,488	3	15	36	497	525
Illinois	N	0	0	N	N	24	305	483	8,359	13,047	—	4	12	132	134
Indiana	—	3	9	79	131	96	206	287	6,963	5,809	—	2	9	53	69
Michigan	—	9	26	251	324	46	251	337	7,013	7,282	—	3	8	118	118
Ohio	27	5	135	247	199	231	434	486	13,997	12,384	3	4	8	140	116
Wisconsin	4	9	107	247	362	124	134	165	4,514	3,966	—	1	6	54	88
W.N. Central	10	18	56	494	1,042	294	576	678	19,049	16,370	2	6	18	184	276
Iowa	—	5	13	131	155	23	59	92	1,969	1,585	—	0	1	1	—
Kansas	—	1	4	45	74	23	78	108	2,696	1,947	—	1	5	36	41
Minnesota	—	0	29	—	403	7	115	138	3,706	3,097	—	0	7	5	72
Missouri	6	5	13	168	219	210	241	304	8,129	7,033	1	2	9	91	108
Nebraska	4	2	6	79	85	28	47	77	1,587	1,307	—	1	4	30	22
North Dakota	—	0	4	14	31	3	16	34	465	614	1	0	2	12	18
South Dakota	—	2	6	57	75	—	22	36	497	787	—	0	2	9	15
S. Atlantic	1	47	78	1,295	1,721	1,281	2,083	3,743	66,519	63,207	1	21	39	722	756
Delaware	—	0	3	15	9	50	34	59	1,077	963	—	0	3	17	12
District of Columbia	—	0	3	9	39	65	83	207	3,010	1,933	—	0	1	7	11
Florida	—	20	34	625	726	365	602	903	19,652	17,208	1	5	11	181	231
Georgia	—	13	23	344	476	131	414	487	13,182	12,697	—	4	10	127	127
Maryland	—	3	11	85	142	187	170	398	5,126	5,154	—	2	11	62	81
North Carolina	—	0	0	—	—	1	392	440	8,511	12,006	—	3	10	111	124
South Carolina	—	2	8	63	88	200	202	289	6,938	5,818	—	2	10	108	63
Virginia	1	5	23	139	182	252	234	1,530	8,196	6,897	—	2	15	87	83
West Virginia	—	1	5	15	59	30	22	38	827	531	—	1	3	22	24
E.S. Central	—	3	10	96	149	262	660	884	20,802	18,947	1	7	12	221	228
Alabama	—	3	10	96	149	—	160	258	5,388	5,662	—	1	4	38	58
Kentucky	N	0	0	N	N	—	131	275	4,270	2,871	1	1	6	51	31
Mississippi	N	0	0	N	N	262	140	335	4,434	4,202	—	1	4	37	38
Tennessee	N	0	0	N	N	—	215	345	6,710	6,212	—	3	7	95	101
W.S. Central	6	4	20	90	220	1,164	1,340	1,703	43,514	40,747	6	10	48	358	316
Arkansas	6	3	18	81	96	122	91	215	2,622	3,192	—	1	4	38	33
Louisiana	—	0	10	9	124	106	228	517	7,825	6,372	—	1	4	38	44
Oklahoma	N	0	0	N	N	33	137	196	4,174	4,721	2	2	8	70	51
Texas	N	0	0	N	N	903	865	1,212	28,893	26,462	4	6	38	212	188
Mountain	20	24	42	711	738	303	585	768	18,909	16,497	6	8	19	279	246
Arizona	—	3	7	92	82	127	213	367	6,888	6,003	2	2	8	93	84
Colorado	15	10	15	285	270	115	140	184	4,370	3,474	4	1	5	57	46
Idaho	4	3	8	91	117	—	14	39	517	416	—	0	3	17	23
Montana	—	2	8	68	62	13	15	26	470	585	—	0	3	17	11
Nevada	—	1	4	19	45	1	88	127	2,509	2,540	—	1	3	25	23
New Mexico	—	2	9	45	40	17	74	130	2,416	2,027	—	1	3	29	36
Utah	1	3	9	104	94	29	46	65	1,548	1,295	—	1	4	41	22
Wyoming	—	0	3	7	28	1	6	13	191	157	—	0	2	—	1
Pacific	43	67	727	2,345	1,939	1,038	1,674	2,000	54,570	47,951	1	4	13	144	123
Alaska	—	1	5	37	44	—	39	54	1,220	834	1	0	1	10	13
California	32	55	78	1,826	1,658	790	1,377	1,590	45,146	38,778	—	1	4	34	28
Hawaii	—	1	5	41	28	—	28	50	835	865	—	0	3	19	26
Oregon	6	6	18	185	209	105	90	130	2,949	2,463	—	2	7	77	56
Washington	5	1	672	256	—	143	143	208	4,420	5,011	—	0	9	4	—
Territories															
American Samoa	—	0	0	—	—	—	0	0	—	—	—	0	0	—	—
C.N.M.I.	—	—	—	—	—	—	—	—	—	—	—	—	—	—	—
Guam	—	0	0	—	—	—	0	0	—	—	—	0	0	—	—
Puerto Rico	—	0	1	3	19	3	12	24	338	475	—	0	2	3	5
U.S. Virgin Islands	—	0	0	—	—	—	0	2	1	29	—	0	0	—	—

C.N.M.I.: Commonwealth of Northern Mariana Islands.

U: Unavailable. —: No reported cases. N: Not reportable. NN: Not Nationally Notifiable. NP: Nationally notifiable but not published. Cum: Cumulative year-to-date counts. Med: Median. Max: Maximum.

* Three low incidence conditions, rubella, rubella congenital, and tetanus, are in Table II to facilitate case count verification with reporting jurisdictions.

[†] Case counts for reporting years 2016 and 2017 are provisional and subject to change. For further information on interpretation of these data, see<http://www.cdc.gov/nndss/document/ProvisionalNationallyNotifiableDiseasesSurveillanceData20100927.pdf>. Data for tuberculosis are displayed in Table III, which appears quarterly.[§] Data for *Haemophilus influenzae* (age <5 for serotype b, non typeable, non-b serotype, and unknown serotype) are available in Table I.

Morbidity and Mortality Weekly Report

TABLE II. (Continued) Provisional cases of selected notifiable diseases (≥1,000 cases reported during the preceding year), and selected* low frequency diseases, United States and U.S. territories, weeks ending August 19, 2017, and August 20, 2016 (33rd week)[†] (Export data)

Reporting area	Hepatitis (viral, acute, by type)									
	A					B				
	Current week	Previous 52 weeks		Cum 2017	Cum 2016	Current week	Previous 52 weeks		Cum 2017	Cum 2016
	Med	Max				Med	Max			
United States	14	39	101	1,234	1,123	16	62	146	1,854	1,958
New England	—	2	5	35	53	—	2	5	67	57
Connecticut	—	0	2	7	7	—	0	1	4	5
Maine	—	0	1	2	3	—	1	4	48	28
Massachusetts	—	1	4	22	34	—	0	3	14	22
New Hampshire	—	0	1	2	3	—	0	0	—	—
Rhode Island	—	0	1	—	3	U	0	0	U	U
Vermont	—	0	1	2	3	—	0	1	1	2
Mid. Atlantic	6	5	11	166	138	3	4	11	105	129
New Jersey	—	1	4	30	50	—	1	4	19	33
New York (Upstate)	2	1	4	37	31	2	0	4	18	24
New York City	4	1	6	64	27	—	1	4	33	45
Pennsylvania	—	1	4	35	30	1	1	4	35	27
E.N. Central	1	5	15	233	91	2	9	22	358	348
Illinois	—	1	5	29	37	—	0	3	15	29
Indiana	—	0	2	7	13	—	3	10	126	94
Michigan	—	3	13	172	20	—	0	4	32	18
Ohio	1	0	7	18	19	1	4	16	168	200
Wisconsin	—	0	4	7	2	1	0	3	17	7
W.N. Central	—	1	5	32	49	2	2	5	60	63
Iowa	—	0	2	4	9	—	0	2	11	7
Kansas	—	0	1	4	3	—	0	3	17	12
Minnesota	—	0	2	19	10	—	0	2	6	11
Missouri	—	0	1	4	11	2	1	3	22	24
Nebraska	—	0	4	1	13	—	0	2	4	6
North Dakota	—	0	0	—	2	—	0	1	—	1
South Dakota	—	0	0	—	1	—	0	0	—	2
S. Atlantic	1	8	55	235	222	1	22	33	661	756
Delaware	—	0	1	2	1	—	0	2	8	1
District of Columbia	—	0	3	1	—	U	0	0	U	U
Florida	—	4	10	141	68	—	11	19	325	333
Georgia	1	1	5	23	22	1	2	7	65	68
Maryland	—	0	5	13	15	—	0	2	16	19
North Carolina	—	1	5	16	33	—	3	10	68	104
South Carolina	—	0	4	11	12	—	0	4	7	20
Virginia	—	1	41	23	68	—	1	5	44	31
West Virginia	—	0	4	5	3	—	4	13	128	180
E.S. Central	—	0	4	20	23	7	11	19	326	305
Alabama	—	0	3	9	14	—	1	5	43	41
Kentucky	—	0	1	6	4	5	4	12	139	121
Mississippi	—	0	1	2	2	—	1	3	23	16
Tennessee	—	0	2	3	3	2	4	9	121	127
W.S. Central	4	3	9	94	103	—	4	36	131	158
Arkansas	—	0	2	5	8	—	1	5	30	33
Louisiana	—	0	1	4	10	—	1	6	40	32
Oklahoma	—	0	4	4	5	—	0	15	8	5
Texas	4	2	8	81	80	—	2	17	53	88
Mountain	2	2	11	119	59	—	1	4	47	49
Arizona	—	1	5	44	21	—	0	2	12	10
Colorado	2	1	7	37	14	—	0	2	9	14
Idaho	—	0	1	2	3	—	0	2	6	6
Montana	—	0	1	3	1	—	0	1	3	1
Nevada	—	0	2	6	10	—	0	3	11	14
New Mexico	—	0	1	2	1	—	0	0	—	1
Utah	—	0	3	19	9	—	0	2	6	3
Wyoming	—	0	3	6	—	U	0	0	U	U
Pacific	—	9	35	300	385	1	3	47	99	93
Alaska	—	0	1	—	1	—	0	1	4	5
California	—	6	19	272	152	—	2	6	60	79
Hawaii	—	0	25	4	222	—	0	1	1	—
Oregon	—	0	3	16	10	—	0	3	9	9
Washington	—	0	31	8	—	1	0	45	25	—
Territories										
American Samoa	—	0	0	—	—	—	0	0	—	—
C.N.M.I.	—	—	—	—	—	—	—	—	—	—
Guam	—	0	1	—	1	—	0	0	—	—
Puerto Rico	—	0	1	2	19	—	0	1	1	11
U.S. Virgin Islands	—	0	0	—	—	—	0	0	—	—

C.N.M.I.: Commonwealth of Northern Mariana Islands.

U: Unavailable. —: No reported cases. N: Not reportable. NN: Not Nationally Notifiable. NP: Nationally notifiable but not published. Cum: Cumulative year-to-date counts. Med: Median. Max: Maximum.

* Three low incidence conditions, rubella, rubella congenital, and tetanus, are in Table II to facilitate case count verification with reporting jurisdictions.

[†] Case counts for reporting years 2016 and 2017 are provisional and subject to change. For further information on interpretation of these data, see <http://www.cdc.gov/nndss/document/ProvisionalNationallyNotifiableDiseasesSurveillanceData20100927.pdf>. Data for tuberculosis are displayed in Table III, which appears quarterly.

Morbidity and Mortality Weekly Report

TABLE II. (Continued) Provisional cases of selected notifiable diseases (≥1,000 cases reported during the preceding year), and selected* low frequency diseases, United States and U.S. territories, weeks ending August 19, 2017, and August 20, 2016 (33rd week)[†] (Export data)

Reporting area	Hepatitis (viral, acute, by type) [§] (Continued)									
	C (confirmed)					C (probable)				
	Current week	Previous 52 weeks		Cum 2017	Cum 2016	Current week	Previous 52 weeks		Cum 2017	Cum 2016
	Med	Max				Med	Max			
United States	5	43	132	1,268	1,931	3	18	80	560	649
New England	—	5	14	150	352	—	2	4	38	87
Connecticut	—	0	1	4	16	—	0	0	—	—
Maine	—	0	3	15	11	—	0	1	5	10
Massachusetts	—	5	13	128	320	—	1	4	33	77
New Hampshire	—	0	0	—	—	—	0	0	—	—
Rhode Island	—	0	0	—	—	—	0	0	—	—
Vermont	—	0	1	3	5	—	0	0	—	—
Mid. Atlantic	3	7	16	195	354	—	0	4	27	14
New Jersey	—	1	5	24	86	—	0	0	—	—
New York (Upstate)	3	3	9	89	118	—	0	3	12	14
New York City	—	0	3	6	2	—	0	0	—	—
Pennsylvania	—	3	9	76	148	—	0	3	15	—
E.N. Central	—	8	16	261	340	3	3	7	108	94
Illinois	—	0	3	23	16	—	0	2	7	2
Indiana	—	2	7	77	98	—	1	3	29	21
Michigan	—	0	5	59	38	—	0	3	34	16
Ohio	—	3	7	81	124	3	1	5	38	55
Wisconsin	—	1	4	21	64	—	0	0	—	—
W.N. Central	—	2	5	49	69	—	0	1	4	3
Iowa	—	0	0	—	—	—	0	0	—	—
Kansas	—	0	2	9	9	—	0	1	1	1
Minnesota	—	0	3	4	30	—	0	1	1	1
Missouri	—	1	3	29	11	—	0	0	—	—
Nebraska	—	0	1	—	2	—	0	1	1	—
North Dakota	—	0	1	1	1	—	0	0	—	—
South Dakota	—	0	2	6	16	—	0	1	1	1
S. Atlantic	—	9	18	284	416	—	4	11	122	169
Delaware	—	0	0	—	—	—	0	0	—	—
District of Columbia	—	0	0	—	—	—	0	0	—	—
Florida	—	4	9	160	170	—	1	4	36	39
Georgia	—	1	5	19	63	—	0	4	13	20
Maryland	—	0	3	12	27	—	0	2	6	6
North Carolina	—	0	4	5	63	—	0	4	9	67
South Carolina	—	0	1	2	8	—	0	1	1	1
Virginia	—	1	4	31	28	—	0	5	14	16
West Virginia	—	2	6	55	57	—	1	5	43	20
E.S. Central	2	4	9	123	200	—	5	12	164	194
Alabama	—	0	3	11	25	—	0	4	15	37
Kentucky	—	1	8	40	62	—	3	9	97	98
Mississippi	—	0	0	—	—	—	0	0	—	—
Tennessee	2	2	6	72	113	—	2	5	52	59
W.S. Central	—	1	17	33	44	—	0	23	26	34
Arkansas	—	0	0	—	—	—	0	0	—	—
Louisiana	—	0	1	2	5	—	0	2	3	10
Oklahoma	—	0	12	8	15	—	0	23	10	24
Texas	—	0	5	23	24	—	0	2	13	—
Mountain	—	2	9	66	109	—	1	5	39	39
Arizona	—	0	0	—	—	—	0	0	—	—
Colorado	—	0	3	10	23	—	0	2	11	3
Idaho	—	0	1	5	4	—	0	1	3	2
Montana	—	0	2	9	13	—	0	1	1	—
Nevada	—	0	3	16	9	—	0	1	1	10
New Mexico	—	0	2	5	14	—	0	1	5	13
Utah	—	1	4	21	46	—	0	3	18	11
Wyoming	—	0	0	—	—	—	0	0	—	—
Pacific	—	2	62	107	47	—	0	33	32	15
Alaska	—	0	0	—	—	—	0	0	—	—
California	—	1	6	52	35	—	0	3	17	12
Hawaii	—	0	0	—	—	—	0	0	—	—
Oregon	—	0	3	22	12	—	0	1	3	3
Washington	—	0	62	33	—	—	0	33	12	—
Territories										
American Samoa	—	0	0	—	—	—	0	0	—	—
C.N.M.I.	—	—	—	—	—	—	—	—	—	—
Guam	—	0	0	—	—	—	0	0	—	—
Puerto Rico	—	0	0	—	—	—	0	0	—	—
U.S. Virgin Islands	—	0	0	—	—	—	0	0	—	—

C.N.M.I.: Commonwealth of Northern Mariana Islands.

U: Unavailable. —: No reported cases. N: Not reportable. NN: Not Nationally Notifiable. NP: Nationally notifiable but not published. Cum: Cumulative year-to-date counts. Med: Median. Max: Maximum.

* Three low incidence conditions, rubella, rubella congenital, and tetanus, are in Table II to facilitate case count verification with reporting jurisdictions.

[†] Case counts for reporting years 2016 and 2017 are provisional and subject to change. For further information on interpretation of these data, see <http://www.cdc.gov/nndss/document/ProvisionalNationalNotifiableDiseasesSurveillanceData20100927.pdf>. Data for tuberculosis are displayed in Table III, which appears quarterly.

[§] Based on the CSTE Position Statement 15-ID-03: Revision of the Case Definition of Hepatitis C for National Notification, acute hepatitis C is now reported by case classification status.

Morbidity and Mortality Weekly Report

TABLE II. (Continued) Provisional cases of selected notifiable diseases (≥1,000 cases reported during the preceding year), and selected* low frequency diseases, United States and U.S. territories, weeks ending August 19, 2017, and August 20, 2016 (33rd week)[†] (Export data)

Reporting area	Invasive Pneumococcal Disease [§] (all ages)									
	Confirmed					Probable				
	Current week	Previous 52 weeks		Cum 2017	Cum 2016	Current week	Previous 52 weeks		Cum 2017	Cum 2016
	Med	Max				Med	Max			
United States	76	332	791	11,103	11,416	2	1	12	74	12
New England	—	25	51	809	710	—	0	2	3	—
Connecticut	—	5	18	175	147	—	0	2	3	—
Maine	—	2	10	89	87	—	0	0	—	—
Massachusetts	—	12	28	415	331	—	0	0	—	—
New Hampshire	—	2	6	61	69	—	0	0	—	—
Rhode Island	—	1	11	39	37	—	0	0	—	—
Vermont	—	1	5	30	39	—	0	0	—	—
Mid. Atlantic	19	52	129	1,579	1,783	—	0	8	32	—
New Jersey	—	7	22	180	378	—	0	2	9	—
New York (Upstate)	6	16	70	573	603	—	0	0	—	—
New York City	11	13	29	458	415	—	0	2	2	—
Pennsylvania	2	10	23	368	387	—	0	4	21	—
E.N. Central	15	57	108	1,969	2,039	1	0	2	7	7
Illinois	N	0	0	N	N	N	0	0	N	N
Indiana	—	11	33	380	446	—	0	0	—	—
Michigan	—	16	28	502	625	—	0	2	4	7
Ohio	13	19	52	758	689	1	0	2	3	—
Wisconsin	2	10	22	329	279	—	0	0	—	—
W.N. Central	2	27	47	816	767	—	0	3	13	2
Iowa	N	0	0	N	N	N	0	0	N	N
Kansas	—	5	14	181	139	—	0	1	—	—
Minnesota	—	0	14	—	313	—	0	0	—	—
Missouri	1	10	24	393	48	—	0	3	9	1
Nebraska	1	3	10	102	128	—	0	1	2	1
North Dakota	—	2	5	54	50	—	0	0	—	—
South Dakota	—	2	7	86	89	—	0	1	2	—
S. Atlantic	9	56	120	1,995	1,913	—	0	3	7	—
Delaware	—	1	6	48	44	—	0	0	—	—
District of Columbia	—	1	4	33	44	—	0	0	—	—
Florida	6	10	24	409	453	—	0	2	4	—
Georgia	—	18	39	610	620	—	0	0	—	—
Maryland	—	9	19	289	304	—	0	1	1	—
North Carolina	N	0	0	N	N	N	0	0	N	N
South Carolina	2	8	37	437	239	—	0	2	2	—
Virginia	1	0	2	17	18	—	0	0	—	—
West Virginia	—	4	13	152	191	—	0	0	—	—
E.S. Central	11	33	72	1,155	1,080	—	0	1	1	1
Alabama	—	6	26	194	226	—	0	0	—	—
Kentucky	3	6	17	228	158	—	0	1	1	1
Mississippi	1	6	11	157	149	—	0	0	—	—
Tennessee	7	16	38	576	547	—	0	1	—	—
W.S. Central	9	35	231	1,298	1,521	1	0	2	7	1
Arkansas	2	5	32	214	170	—	0	0	—	1
Louisiana	—	5	13	158	248	—	0	1	—	—
Oklahoma	N	0	0	N	N	N	0	0	N	N
Texas	7	26	189	926	1,103	1	0	2	7	—
Mountain	10	36	69	1,352	1,469	—	0	1	4	1
Arizona	2	11	28	453	529	—	0	1	2	—
Colorado	7	10	19	343	321	—	0	0	—	—
Idaho	N	0	0	N	N	N	0	0	N	N
Montana	1	2	4	58	71	—	0	1	2	1
Nevada	—	4	16	160	147	—	0	0	—	—
New Mexico	—	5	14	212	214	—	0	0	—	—
Utah	—	4	10	114	164	—	0	0	—	—
Wyoming	—	0	3	12	23	—	0	0	—	—
Pacific	1	4	12	130	134	—	0	0	—	—
Alaska	1	2	6	66	79	—	0	0	—	—
California	N	0	0	N	N	N	0	0	N	N
Hawaii	—	2	8	64	55	—	0	0	—	—
Oregon	N	0	0	N	N	N	0	0	N	N
Washington	N	0	0	N	N	N	0	0	N	N
Territories										
American Samoa	N	0	0	N	N	N	0	0	N	N
C.N.M.I.	—	—	—	—	—	—	—	—	—	—
Guam	—	0	0	—	—	—	0	0	—	—
Puerto Rico	—	0	0	—	—	—	0	0	—	—
U.S. Virgin Islands	—	0	0	—	—	—	0	0	—	—

C.N.M.I.: Commonwealth of Northern Mariana Islands.

U: Unavailable. —: No reported cases. N: Not reportable. NN: Not Nationally Notifiable. NP: Nationally notifiable but not published. Cum: Cumulative year-to-date counts. Med: Median. Max: Maximum.

* Three low incidence conditions, rubella, rubella congenital, and tetanus, are in Table II to facilitate case count verification with reporting jurisdictions.

[†] Case counts for reporting years 2016 and 2017 are provisional and subject to change. For further information on interpretation of these data, see <http://www.cdc.gov/nndss/document/ProvisionalNationalNotifiableDiseasesSurveillanceData20100927.pdf>. Data for tuberculosis are displayed in Table III, which appears quarterly.

[§] Includes drug resistant and susceptible cases of Invasive Pneumococcal Disease. This condition was previously named *Streptococcus pneumoniae* invasive disease and cases were reported to CDC using different event codes to specify whether the cases were drug resistant or in a defined age group, such as <5 years.

Morbidity and Mortality Weekly Report

TABLE II. (Continued) Provisional cases of selected notifiable diseases (≥1,000 cases reported during the preceding year), and selected* low frequency diseases, United States and U.S. territories, weeks ending August 19, 2017, and August 20, 2016 (33rd week)[†] (Export data)

Reporting area	Invasive Pneumococcal Disease [§] (age <5)									
	Confirmed					Probable				
	Current week	Previous 52 weeks		Cum 2017	Cum 2016	Current week	Previous 52 weeks		Cum 2017	Cum 2016
	Med	Max				Med	Max			
United States	6	21	45	610	716	—	0	2	3	3
New England	—	1	3	26	40	—	0	0	—	—
Connecticut	—	0	2	7	8	—	0	0	—	—
Maine	—	0	1	2	6	—	0	0	—	—
Massachusetts	—	0	2	11	22	—	0	0	—	—
New Hampshire	—	0	1	3	1	—	0	0	—	—
Rhode Island	—	0	1	2	2	—	0	0	—	—
Vermont	—	0	1	1	1	—	0	0	—	—
Mid. Atlantic	—	2	9	68	85	—	0	0	—	—
New Jersey	—	0	2	7	14	—	0	0	—	—
New York (Upstate)	—	1	7	30	34	—	0	0	—	—
New York City	—	0	2	15	18	—	0	0	—	—
Pennsylvania	—	0	3	16	19	—	0	0	—	—
E.N. Central	1	3	9	110	104	—	0	1	1	1
Illinois	—	0	0	—	—	—	0	0	—	—
Indiana	—	0	3	22	10	—	0	0	—	—
Michigan	—	0	3	16	35	—	0	1	—	1
Ohio	1	1	5	46	44	—	0	1	1	—
Wisconsin	—	0	3	26	15	—	0	0	—	—
W.N. Central	—	1	5	49	61	—	0	1	1	1
Iowa	N	0	0	N	N	N	0	0	N	N
Kansas	—	0	2	11	8	—	0	0	—	—
Minnesota	—	0	2	—	21	—	0	0	—	—
Missouri	—	0	2	18	8	—	0	1	1	1
Nebraska	—	0	2	5	13	—	0	0	—	—
North Dakota	—	0	2	6	2	—	0	0	—	—
South Dakota	—	0	2	9	9	—	0	0	—	—
S. Atlantic	3	5	10	130	131	—	0	0	—	—
Delaware	—	0	1	2	1	—	0	0	—	—
District of Columbia	—	0	1	1	—	—	0	0	—	—
Florida	1	1	3	44	42	—	0	0	—	—
Georgia	—	1	6	28	39	—	0	0	—	—
Maryland	—	0	2	18	20	—	0	0	—	—
North Carolina	N	0	0	N	N	N	0	0	N	N
South Carolina	1	0	4	13	4	—	0	0	—	—
Virginia	1	0	2	17	18	—	0	0	—	—
West Virginia	—	0	2	7	7	—	0	0	—	—
E.S. Central	1	2	8	52	56	—	0	0	—	1
Alabama	—	0	3	13	18	—	0	0	—	—
Kentucky	—	0	2	10	4	—	0	0	—	1
Mississippi	—	0	2	8	12	—	0	0	—	—
Tennessee	1	0	7	21	22	—	0	0	—	—
W.S. Central	—	3	22	99	135	—	0	1	1	—
Arkansas	—	0	2	8	14	—	0	0	—	—
Louisiana	—	0	2	11	22	—	0	0	—	—
Oklahoma	—	0	3	8	9	—	0	0	—	—
Texas	—	2	19	72	90	—	0	1	1	—
Mountain	—	2	7	68	96	—	0	1	—	—
Arizona	—	0	2	17	35	—	0	0	—	—
Colorado	—	0	2	14	13	—	0	0	—	—
Idaho	—	0	1	5	7	—	0	1	—	—
Montana	—	0	2	4	3	—	0	0	—	—
Nevada	—	0	1	5	9	—	0	0	—	—
New Mexico	—	0	2	7	10	—	0	0	—	—
Utah	—	0	3	16	18	—	0	0	—	—
Wyoming	—	0	1	—	1	—	0	0	—	—
Pacific	1	0	2	8	8	—	0	0	—	—
Alaska	1	0	1	5	7	—	0	0	—	—
California	N	0	0	N	N	N	0	0	N	N
Hawaii	—	0	1	3	1	—	0	0	—	—
Oregon	N	0	0	N	N	N	0	0	N	N
Washington	N	0	0	N	N	N	0	0	N	N
Territories										
American Samoa	—	0	0	—	—	—	0	0	—	—
C.N.M.I.	—	—	—	—	—	—	—	—	—	—
Guam	—	0	0	—	—	—	0	0	—	—
Puerto Rico	—	0	0	—	—	—	0	0	—	—
U.S. Virgin Islands	—	0	0	—	—	—	0	0	—	—

C.N.M.I.: Commonwealth of Northern Mariana Islands.

U: Unavailable. —: No reported cases. N: Not reportable. NN: Not Nationally Notifiable. NP: Nationally notifiable but not published. Cum: Cumulative year-to-date counts. Med: Median. Max: Maximum.

* Three low incidence conditions, rubella, rubella congenital, and tetanus, are in Table II to facilitate case count verification with reporting jurisdictions.

[†] Case counts for reporting years 2016 and 2017 are provisional and subject to change. For further information on interpretation of these data, see <http://www.cdc.gov/nndss/document/ProvisionalNationalNotifiableDiseasesSurveillanceData20100927.pdf>. Data for tuberculosis are displayed in Table III, which appears quarterly.

[§] Includes drug resistant and susceptible cases of Invasive Pneumococcal Disease. This condition was previously named *Streptococcus pneumoniae* invasive disease and cases were reported to CDC using different event codes to specify whether the cases were drug resistant or in a defined age group, such as <5 years.

Morbidity and Mortality Weekly Report

TABLE II. (Continued) Provisional cases of selected notifiable diseases (≥1,000 cases reported during the preceding year), and selected* low frequency diseases, United States and U.S. territories, weeks ending August 19, 2017, and August 20, 2016 (33rd week)† (Export data)

Reporting area	Legionellosis					Malaria				
	Current week	Previous 52 weeks		Cum 2017	Cum 2016	Current week	Previous 52 weeks		Cum 2017	Cum 2016
		Med	Max				Med	Max		
United States	57	135	236	3,566	2,939	23	32	102	947	1,100
New England	1	6	38	222	136	—	2	7	76	90
Connecticut	1	2	6	62	34	—	0	2	1	6
Maine	—	0	2	7	9	—	0	3	9	8
Massachusetts	—	3	18	100	61	—	2	6	55	61
New Hampshire	—	0	8	26	18	—	0	2	5	8
Rhode Island	—	0	9	16	11	—	0	3	5	3
Vermont	—	0	2	11	3	—	0	1	1	4
Mid. Atlantic	33	28	57	815	601	12	9	28	259	245
New Jersey	—	2	9	45	106	—	1	9	61	52
New York (Upstate)	13	11	27	305	176	6	1	8	42	36
New York City	14	4	24	212	117	6	4	14	110	113
Pennsylvania	6	7	21	253	202	—	1	5	46	44
E.N. Central	14	25	84	835	629	5	3	27	104	120
Illinois	—	5	24	153	171	—	1	5	25	43
Indiana	1	3	12	87	74	—	0	4	7	11
Michigan	—	4	30	137	114	—	1	4	26	26
Ohio	13	10	41	364	222	5	1	13	45	25
Wisconsin	—	2	10	94	48	—	0	1	1	15
W.N. Central	—	6	26	190	202	—	2	7	49	84
Iowa	—	0	3	18	19	—	0	3	10	13
Kansas	—	0	4	11	14	—	0	2	8	3
Minnesota	—	1	12	45	49	—	0	4	—	43
Missouri	—	2	13	93	104	—	0	3	19	12
Nebraska	—	0	3	14	8	—	0	1	3	3
North Dakota	—	0	2	3	3	—	0	2	5	6
South Dakota	—	0	1	6	5	—	0	1	4	4
S. Atlantic	—	23	39	609	576	3	8	24	276	289
Delaware	—	0	4	16	13	—	0	3	6	12
District of Columbia	—	0	1	—	9	—	0	2	8	12
Florida	—	7	13	200	165	—	1	5	30	36
Georgia	—	3	7	112	66	—	1	5	49	40
Maryland	—	2	12	67	80	—	3	15	117	115
North Carolina	—	3	11	88	118	—	0	3	15	28
South Carolina	—	1	4	19	31	—	0	3	—	6
Virginia	—	3	14	105	79	3	1	4	51	39
West Virginia	—	0	3	2	15	—	0	0	—	1
E.S. Central	1	9	19	268	167	—	0	4	15	30
Alabama	—	1	6	43	30	—	0	1	2	5
Kentucky	—	2	6	67	44	—	0	2	5	7
Mississippi	—	1	5	31	16	—	0	1	3	7
Tennessee	1	3	11	127	77	—	0	2	5	11
W.S. Central	5	7	39	224	176	—	2	29	57	89
Arkansas	2	1	5	30	27	—	0	2	3	2
Louisiana	—	0	2	8	16	—	0	1	1	10
Oklahoma	1	0	20	33	4	—	0	3	4	1
Texas	2	5	20	153	129	—	2	25	49	76
Mountain	3	4	14	130	136	2	1	4	25	56
Arizona	—	2	6	59	46	2	0	4	13	25
Colorado	1	1	6	29	32	—	0	2	1	13
Idaho	—	0	1	3	8	—	0	1	4	—
Montana	1	0	1	9	5	—	0	1	3	3
Nevada	—	0	4	10	22	—	0	1	1	4
New Mexico	—	0	3	3	7	—	0	0	—	2
Utah	—	0	3	15	14	—	0	2	3	6
Wyoming	1	0	1	2	2	—	0	1	—	3
Pacific	—	11	84	273	316	1	2	46	86	97
Alaska	—	0	1	3	1	—	0	2	4	2
California	—	9	31	216	290	—	2	5	57	81
Hawaii	—	0	1	4	3	—	0	1	3	—
Oregon	—	1	3	21	22	—	0	2	7	14
Washington	—	0	67	29	—	1	0	44	15	—
Territories										
American Samoa	N	0	0	N	N	—	0	0	—	—
C.N.M.I.	—	—	—	—	—	—	—	—	—	—
Guam	—	0	0	—	—	—	0	0	—	—
Puerto Rico	—	0	2	1	6	—	0	1	—	2
U.S. Virgin Islands	—	0	0	—	—	—	0	0	—	—

C.N.M.I.: Commonwealth of Northern Mariana Islands.

U: Unavailable. —: No reported cases. N: Not reportable. NN: Not Nationally Notifiable. NP: Nationally notifiable but not published. Cum: Cumulative year-to-date counts. Med: Median. Max: Maximum.

* Three low incidence conditions, rubella, rubella congenital, and tetanus, are in Table II to facilitate case count verification with reporting jurisdictions.

† Case counts for reporting years 2016 and 2017 are provisional and subject to change. For further information on interpretation of these data, see <http://www.cdc.gov/nndss/document/ProvisionalNationalNotifiableDiseasesSurveillanceData20100927.pdf>. Data for tuberculosis are displayed in Table III, which appears quarterly.

Morbidity and Mortality Weekly Report

TABLE II. (Continued) Provisional cases of selected notifiable diseases (≥1,000 cases reported during the preceding year), and selected* low frequency diseases, United States and U.S. territories, weeks ending August 19, 2017, and August 20, 2016 (33rd week)[†] (Export data)

Reporting area	Meningococcal disease (<i>Neisseria meningitidis</i>) [§] (all serogroups)					Mumps					Pertussis				
	Current week	Previous 52 weeks		Cum 2017	Cum 2016	Current week	Previous 52 weeks		Cum 2017	Cum 2016	Current week	Previous 52 weeks		Cum 2017	Cum 2016
		Med	Max				Med	Max				Med	Max		
United States	1	6	21	213	253	28	161	519	4,292	2,017	135	306	1,220	9,764	10,280
New England	—	0	1	6	13	—	3	16	132	258	4	19	73	567	514
Connecticut	—	0	1	—	4	—	0	2	8	33	—	1	5	42	69
Maine	—	0	0	—	1	—	0	4	1	4	3	7	19	251	159
Massachusetts	—	0	1	4	8	—	2	14	112	211	—	5	13	128	104
New Hampshire	—	0	0	—	—	—	0	1	2	9	1	1	4	30	41
Rhode Island	—	0	0	—	—	—	0	6	8	1	—	0	19	37	60
Vermont	—	0	1	2	—	—	0	1	1	—	—	2	47	79	81
Mid. Atlantic	1	1	3	24	25	2	14	33	417	115	39	37	103	1,159	1,942
New Jersey	—	0	1	3	6	—	1	4	22	21	—	7	18	177	388
New York (Upstate)	1	0	2	9	6	2	3	23	129	49	20	9	33	345	444
New York City	—	0	3	4	8	—	5	19	161	41	—	3	14	68	203
Pennsylvania	—	0	1	8	5	—	1	15	105	4	19	19	86	569	907
E.N. Central	—	1	6	22	27	—	7	29	389	674	15	63	191	1,759	2,255
Illinois	—	0	2	6	10	—	3	22	241	292	—	13	41	297	615
Indiana	—	0	2	5	5	—	0	4	31	279	—	4	18	206	114
Michigan	—	0	1	3	4	—	0	2	19	13	—	10	21	317	199
Ohio	—	0	3	8	5	—	0	7	50	64	13	18	38	550	604
Wisconsin	—	0	1	—	3	—	0	24	48	26	2	16	133	389	723
W.N. Central	—	0	2	9	20	1	22	84	789	682	5	28	103	817	1,027
Iowa	—	0	1	—	2	—	4	15	96	598	—	2	19	79	83
Kansas	—	0	1	2	5	—	1	19	156	6	—	4	11	116	65
Minnesota	—	0	0	—	5	—	0	12	76	18	—	12	41	253	607
Missouri	—	0	1	5	4	1	11	72	445	4	4	6	87	283	118
Nebraska	—	0	1	2	3	—	0	2	4	45	1	1	5	51	112
North Dakota	—	0	0	—	—	—	0	2	12	9	—	0	4	31	30
South Dakota	—	0	0	—	1	—	0	0	—	2	—	0	1	4	12
S. Atlantic	—	1	5	50	39	6	3	10	137	58	15	26	46	852	851
Delaware	—	0	1	1	—	—	0	1	3	—	—	0	2	4	11
District of Columbia	—	0	0	—	—	—	0	2	10	1	—	0	3	12	6
Florida	—	0	3	16	9	6	0	5	33	11	15	7	19	272	221
Georgia	—	0	2	5	11	—	0	6	34	3	—	3	11	98	128
Maryland	—	0	2	3	1	—	0	3	3	5	—	2	10	59	69
North Carolina	—	0	2	8	3	—	0	3	23	27	—	5	10	163	205
South Carolina	—	0	2	7	4	—	0	2	4	3	—	3	12	114	78
Virginia	—	0	3	9	8	—	0	4	27	7	—	4	24	126	112
West Virginia	—	0	1	1	3	—	0	1	—	1	—	0	2	4	21
E.S. Central	—	0	1	6	12	—	1	13	110	97	3	13	40	587	571
Alabama	—	0	0	—	5	—	0	7	30	1	—	3	17	131	126
Kentucky	—	0	1	2	1	—	0	3	16	92	2	8	28	326	350
Mississippi	—	0	1	2	—	—	0	8	21	1	—	0	2	22	2
Tennessee	—	0	1	2	6	—	0	6	43	3	1	3	9	108	93
W.S. Central	—	0	2	17	25	7	40	334	1,075	30	19	34	222	1,290	877
Arkansas	—	0	1	—	1	—	19	272	537	1	2	3	12	143	26
Louisiana	—	0	1	3	3	—	0	3	11	—	—	1	6	44	38
Oklahoma	—	0	1	1	4	1	7	93	161	1	—	0	59	93	84
Texas	—	0	2	13	17	6	6	63	366	28	17	28	148	1,010	729
Mountain	—	0	2	12	14	2	2	13	141	44	21	32	71	1,189	1,029
Arizona	—	0	1	4	2	—	0	12	32	4	4	8	17	318	211
Colorado	—	0	2	2	3	2	0	10	59	13	15	12	28	385	433
Idaho	—	0	1	1	1	—	0	2	5	1	2	1	6	33	71
Montana	—	0	1	—	—	—	0	3	6	20	—	0	18	62	12
Nevada	—	0	2	2	3	—	0	1	5	2	—	1	6	46	22
New Mexico	—	0	1	2	2	—	0	1	2	2	—	3	11	103	94
Utah	—	0	1	1	2	—	0	9	32	2	—	6	23	234	169
Wyoming	—	0	0	—	—	—	0	0	—	—	—	0	5	8	17
Pacific	—	2	16	67	78	10	12	160	1,102	59	14	41	656	1,544	1,214
Alaska	—	0	1	1	4	—	0	2	5	2	—	1	10	25	86
California	—	1	4	42	62	—	2	11	78	54	1	30	64	998	932
Hawaii	—	0	0	—	1	—	1	26	241	—	—	0	3	14	48
Oregon	—	0	3	16	11	—	1	5	56	3	—	3	10	135	148
Washington	—	0	13	8	—	10	2	152	722	—	13	2	618	372	—
Territories															
American Samoa	—	0	0	—	—	—	0	0	—	—	—	0	0	—	—
C.N.M.I.	—	—	—	—	—	—	—	—	—	—	—	—	—	—	—
Guam	—	0	0	—	—	—	0	0	—	—	—	0	0	—	—
Puerto Rico	—	0	1	1	—	—	0	1	1	1	—	0	1	2	10
U.S. Virgin Islands	—	0	0	—	—	—	0	0	—	—	—	0	0	—	—

C.N.M.I.: Commonwealth of Northern Mariana Islands.
 U: Unavailable. —: No reported cases. N: Not reportable. NN: Not Nationally Notifiable. NP: Nationally notifiable but not published. Cum: Cumulative year-to-date counts. Med: Median. Max: Maximum.

* Three low incidence conditions, rubella, rubella congenital, and tetanus, are in Table II to facilitate case count verification with reporting jurisdictions.

[†] Case counts for reporting years 2016 and 2017 are provisional and subject to change. For further information on interpretation of these data, see <http://www.cdc.gov/nndss/document/ProvisionalNationalNotifiableDiseasesSurveillanceData20100927.pdf>. Data for tuberculosis are displayed in Table III, which appears quarterly.

[§] Data for meningococcal disease, invasive caused by serogroups ACWY, serogroup B, other serogroups, and unknown serogroups are available in Table I.

Morbidity and Mortality Weekly Report

TABLE II. (Continued) Provisional cases of selected notifiable diseases (≥1,000 cases reported during the preceding year), and selected* low frequency diseases, United States and U.S. territories, weeks ending August 19, 2017, and August 20, 2016 (33rd week)† (Export data)

Reporting area	Rabies, animal					Rubella					Rubella, congenital syndrome				
	Current week	Previous 52 weeks		Cum 2017	Cum 2016	Current week	Previous 52 weeks		Cum 2017	Cum 2016	Current week	Previous 52 weeks		Cum 2017	Cum 2016
		Med	Max				Med	Max				Med	Max		
United States	48	49	131	1,454	2,331	—	0	1	6	1	—	0	1	2	—
New England	2	3	8	101	185	—	0	0	—	—	—	0	1	1	—
Connecticut	—	1	3	28	74	—	0	0	—	—	—	0	0	—	—
Maine	1	1	5	28	46	—	0	0	—	—	—	0	0	—	—
Massachusetts	—	0	0	—	—	—	0	0	—	—	—	0	1	1	—
New Hampshire	1	0	2	14	18	—	0	0	—	—	—	0	0	—	—
Rhode Island	—	0	4	6	14	—	0	0	—	—	—	0	0	—	—
Vermont	—	0	4	25	33	—	0	0	—	—	—	0	0	—	—
Mid. Atlantic	21	11	36	343	618	—	0	1	2	—	—	0	0	—	—
New Jersey	—	0	0	—	—	—	0	0	—	—	—	0	0	—	—
New York (Upstate)	21	10	36	343	356	—	0	0	—	—	—	0	0	—	—
New York City	—	0	1	—	3	—	0	1	2	—	—	0	0	—	—
Pennsylvania	—	0	19	—	259	—	0	0	—	—	—	0	0	—	—
E.N. Central	11	1	11	68	81	—	0	0	—	—	—	0	1	—	—
Illinois	10	0	8	44	43	—	0	0	—	—	—	0	1	—	—
Indiana	—	0	0	—	—	—	0	0	—	—	—	0	0	—	—
Michigan	—	0	3	13	26	—	0	0	—	—	—	0	0	—	—
Ohio	1	0	8	11	12	—	0	0	—	—	—	0	0	—	—
Wisconsin	N	0	0	N	N	—	0	0	—	—	—	0	0	—	—
W.N. Central	—	2	7	70	86	—	0	0	—	—	—	0	0	—	—
Iowa	—	0	0	—	—	—	0	0	—	—	—	0	0	—	—
Kansas	—	0	4	29	43	—	0	0	—	—	—	0	0	—	—
Minnesota	—	0	0	—	—	—	0	0	—	—	—	0	0	—	—
Missouri	—	0	3	14	15	—	0	0	—	—	—	0	0	—	—
Nebraska	—	0	2	13	12	—	0	0	—	—	—	0	0	—	—
North Dakota	—	0	0	—	—	—	0	0	—	—	—	0	0	—	—
South Dakota	—	0	3	14	16	—	0	0	—	—	—	0	0	—	—
S. Atlantic	6	10	47	324	631	—	0	1	2	1	—	0	1	—	—
Delaware	—	0	0	—	—	—	0	0	—	—	—	0	0	—	—
District of Columbia	—	0	0	—	—	—	0	0	—	—	—	0	0	—	—
Florida	—	0	45	79	59	—	0	1	2	1	—	0	0	—	—
Georgia	—	0	8	—	162	—	0	0	—	—	—	0	0	—	—
Maryland	—	4	21	96	224	—	0	0	—	—	—	0	1	—	—
North Carolina	6	4	10	131	165	—	0	0	—	—	—	0	0	—	—
South Carolina	N	0	0	N	N	—	0	0	—	—	—	0	0	—	—
Virginia	—	0	0	—	—	—	0	0	—	—	—	0	0	—	—
West Virginia	—	0	3	18	21	—	0	0	—	—	—	0	0	—	—
E.S. Central	—	1	8	37	74	—	0	0	—	—	—	0	0	—	—
Alabama	—	1	7	28	56	—	0	0	—	—	—	0	0	—	—
Kentucky	—	0	3	8	16	—	0	0	—	—	—	0	0	—	—
Mississippi	—	0	1	1	2	—	0	0	—	—	—	0	0	—	—
Tennessee	—	0	0	—	—	—	0	0	—	—	—	0	0	—	—
W.S. Central	5	13	42	380	473	—	0	1	2	—	—	0	1	1	—
Arkansas	1	0	6	31	15	—	0	1	1	—	—	0	0	—	—
Louisiana	—	0	0	—	—	—	0	0	—	—	—	0	0	—	—
Oklahoma	—	0	23	35	20	—	0	0	—	—	—	0	0	—	—
Texas	4	10	42	314	438	—	0	1	1	—	—	0	1	1	—
Mountain	1	0	8	13	49	—	0	0	—	—	—	0	0	—	—
Arizona	N	0	0	N	N	—	0	0	—	—	—	0	0	—	—
Colorado	—	0	0	—	—	—	0	0	—	—	—	0	0	—	—
Idaho	1	0	4	3	10	—	0	0	—	—	—	0	0	—	—
Montana	—	0	0	—	—	—	0	0	—	—	—	0	0	—	—
Nevada	—	0	2	3	6	—	0	0	—	—	—	0	0	—	—
New Mexico	—	0	1	3	4	—	0	0	—	—	—	0	0	—	—
Utah	—	0	3	4	5	—	0	0	—	—	—	0	0	—	—
Wyoming	—	0	2	—	24	—	0	0	—	—	—	0	0	—	—
Pacific	2	5	23	118	134	—	0	0	—	—	—	0	0	—	—
Alaska	—	0	2	12	9	—	0	0	—	—	—	0	0	—	—
California	1	5	12	100	115	—	0	0	—	—	—	0	0	—	—
Hawaii	—	0	0	—	—	—	0	0	—	—	—	0	0	—	—
Oregon	1	0	1	6	10	—	0	0	—	—	—	0	0	—	—
Washington	—	0	20	—	—	—	0	0	—	—	—	0	0	—	—
Territories															
American Samoa	U	0	0	U	U	—	0	0	—	—	—	0	0	—	—
C.N.M.I.	—	—	—	—	—	—	—	—	—	—	—	—	—	—	—
Guam	—	0	0	—	—	—	0	0	—	—	—	0	0	—	—
Puerto Rico	—	0	0	—	—	—	0	0	—	—	—	0	0	—	—
U.S. Virgin Islands	—	0	0	—	—	—	0	0	—	—	—	0	0	—	—

C.N.M.I.: Commonwealth of Northern Mariana Islands.

U: Unavailable. —: No reported cases. N: Not reportable. NN: Not Nationally Notifiable. NP: Nationally notifiable but not published. Cum: Cumulative year-to-date counts. Med: Median. Max: Maximum.

* Three low incidence conditions, rubella, rubella congenital, and tetanus, are in Table II to facilitate case count verification with reporting jurisdictions.

† Case counts for reporting years 2016 and 2017 are provisional and subject to change. For further information on interpretation of these data, see <http://www.cdc.gov/nndss/document/ProvisionalNationalNotifiableDiseasesSurveillanceData20100927.pdf>. Data for tuberculosis are displayed in Table III, which appears quarterly.

Morbidity and Mortality Weekly Report

TABLE II. (Continued) Provisional cases of selected notifiable diseases (≥1,000 cases reported during the preceding year), and selected* low frequency diseases, United States and U.S. territories, weeks ending August 19, 2017, and August 20, 2016 (33rd week)[†] (Export data)

Reporting area	Salmonellosis					Shiga toxin-producing <i>E. coli</i> (STEC) [§]					Shigellosis				
	Current week	Previous 52 weeks		Cum 2017	Cum 2016	Current week	Previous 52 weeks		Cum 2017	Cum 2016	Current week	Previous 52 weeks		Cum 2017	Cum 2016
		Med	Max				Med	Max				Med	Max		
United States	427	897	1,959	25,203	30,675	64	129	506	3,711	4,810	119	261	633	7,789	14,040
New England	5	37	83	1,182	1,424	—	5	16	152	241	—	6	13	187	168
Connecticut	3	8	23	293	309	—	1	7	32	105	—	1	5	49	33
Maine	2	2	7	57	83	—	0	3	15	21	—	0	1	4	—
Massachusetts	—	22	50	647	753	—	2	14	75	79	—	3	8	95	111
New Hampshire	—	3	8	70	127	—	0	3	19	17	—	0	3	8	7
Rhode Island	—	2	7	58	61	—	0	2	2	4	—	0	4	18	16
Vermont	—	2	6	57	91	—	0	3	9	15	—	0	2	13	1
Mid. Atlantic	103	78	205	2,431	2,950	12	13	30	426	473	22	23	41	703	1,009
New Jersey	—	6	55	116	640	—	2	7	64	104	—	4	12	132	175
New York (Upstate)	46	25	56	771	839	4	4	14	144	166	3	4	14	132	119
New York City	35	17	52	629	536	3	3	10	86	62	16	7	18	259	224
Pennsylvania	22	29	66	915	935	5	4	14	132	141	3	7	18	180	491
E.N. Central	45	101	204	3,074	3,949	12	14	41	422	749	17	41	80	1,206	2,428
Illinois	—	29	52	847	1,150	—	2	9	68	246	—	6	16	167	435
Indiana	—	13	32	388	505	—	1	7	36	81	—	3	7	57	209
Michigan	—	17	41	544	716	—	2	10	79	100	—	12	31	347	436
Ohio	45	26	68	918	982	12	3	19	166	151	17	12	30	390	747
Wisconsin	—	12	33	377	596	—	3	13	73	171	—	7	25	245	601
W.N. Central	36	61	114	1,771	2,503	16	20	62	623	942	13	14	50	413	1,770
Iowa	5	13	30	467	500	1	3	19	168	225	1	2	7	73	355
Kansas	—	7	25	224	274	—	2	18	45	85	—	2	17	67	163
Minnesota	—	0	24	—	616	—	0	13	1	278	—	0	10	—	535
Missouri	26	20	44	637	612	6	6	19	216	191	12	7	33	242	563
Nebraska	5	6	23	250	177	8	2	11	112	85	—	1	8	13	125
North Dakota	—	2	9	61	82	1	0	4	32	25	—	0	2	1	12
South Dakota	—	4	13	132	242	—	1	6	49	53	—	0	7	17	17
S. Atlantic	32	220	513	6,313	7,781	—	11	27	323	359	5	51	80	1,527	1,735
Delaware	5	2	17	88	89	—	0	2	5	8	—	1	6	28	36
District of Columbia	—	1	5	13	42	—	0	3	1	4	—	0	2	10	12
Florida	—	110	211	2,973	2,945	—	2	12	74	65	—	20	54	712	430
Georgia	11	36	90	1,072	1,265	—	3	9	92	70	2	9	20	262	466
Maryland	—	13	38	328	524	—	1	6	28	43	—	3	8	118	97
North Carolina	—	26	93	733	1,245	—	1	5	25	44	—	7	28	137	242
South Carolina	—	16	78	463	865	—	0	2	16	30	—	3	22	167	172
Virginia	16	21	46	607	660	—	2	9	81	80	3	3	13	91	274
West Virginia	—	2	12	36	146	—	0	3	1	15	—	0	2	2	6
E.S. Central	43	74	210	1,999	2,407	1	5	12	148	197	4	18	39	538	462
Alabama	—	24	48	584	715	—	0	4	17	22	—	3	8	125	183
Kentucky	23	11	35	359	463	—	1	5	26	58	1	7	20	172	123
Mississippi	17	20	54	603	635	—	0	2	12	13	2	2	8	89	36
Tennessee	3	17	111	453	594	1	3	7	93	104	1	5	13	152	120
W.S. Central	88	133	646	3,252	4,480	5	20	166	537	633	20	45	202	1,186	3,942
Arkansas	12	13	34	343	424	—	1	6	50	72	3	3	15	162	109
Louisiana	14	13	51	190	775	—	0	2	3	16	4	4	22	63	264
Oklahoma	40	17	42	473	502	5	2	39	61	83	3	3	44	94	523
Texas	22	88	589	2,246	2,779	—	16	122	423	462	10	33	151	867	3,046
Mountain	47	55	89	1,693	1,766	5	14	31	375	542	18	21	46	594	1,295
Arizona	18	16	34	476	506	1	3	9	102	93	13	11	30	305	936
Colorado	23	12	33	405	431	1	2	11	43	147	4	3	16	108	95
Idaho	4	4	10	134	111	1	2	12	80	100	1	0	3	19	37
Montana	1	3	8	90	120	1	2	7	62	85	—	0	3	7	8
Nevada	—	3	9	89	129	—	0	4	11	38	—	0	6	22	41
New Mexico	—	6	17	176	189	—	0	5	22	29	—	3	17	109	122
Utah	1	7	27	265	231	1	1	6	49	44	—	0	4	19	52
Wyoming	—	1	6	58	49	—	0	2	6	6	—	0	3	5	4
Pacific	28	113	824	3,488	3,415	13	22	274	705	674	20	46	232	1,435	1,231
Alaska	1	1	3	28	50	—	0	3	5	8	—	0	2	6	4
California	11	88	141	2,612	2,924	—	15	39	421	537	3	41	71	1,180	1,117
Hawaii	—	5	16	147	167	—	0	3	15	12	—	0	3	26	28
Oregon	11	9	19	303	274	4	4	10	128	117	—	2	13	82	82
Washington	5	2	754	398	—	9	0	259	136	—	17	0	191	141	—
Territories															
American Samoa	—	0	0	—	—	—	0	0	—	—	—	0	0	—	—
C.N.M.I.	—	—	—	—	—	—	—	—	—	—	—	—	—	—	—
Guam	—	0	5	—	7	—	0	0	—	—	—	0	5	—	4
Puerto Rico	—	7	25	131	366	—	0	0	—	—	—	0	2	5	19
U.S. Virgin Islands	—	0	0	—	—	—	0	0	—	—	—	0	0	—	—

C.N.M.I.: Commonwealth of Northern Mariana Islands.

U: Unavailable. —: No reported cases. N: Not reportable. NN: Not Nationally Notifiable. NP: Nationally notifiable but not published. Cum: Cumulative year-to-date counts. Med: Median. Max: Maximum.

* Three low incidence conditions, rubella, rubella congenital, and tetanus, are in Table II to facilitate case count verification with reporting jurisdictions.

[†] Case counts for reporting years 2016 and 2017 are provisional and subject to change. For further information on interpretation of these data, see <http://www.cdc.gov/nndss/document/ProvisionalNationalNotifiableDiseasesSurveillanceData20100927.pdf>. Data for tuberculosis are displayed in Table III, which appears quarterly.

[§] Includes *E. coli* O157:H7, Shiga toxin-positive, serogroup non-O157, and Shiga toxin-positive, not serogrouped.

Morbidity and Mortality Weekly Report

TABLE II. (Continued) Provisional cases of selected notifiable diseases (≥1,000 cases reported during the preceding year), and selected* low frequency diseases, United States and U.S. territories, weeks ending August 19, 2017, and August 20, 2016 (33rd week)[†] (Export data)

Reporting area	Spotted Fever Rickettsiosis [§]										Syphilis, primary and secondary				
	Confirmed					Probable					Current week	Previous 52 weeks		Cum 2017	Cum 2016
	Current week	Previous 52 weeks		Cum 2017	Cum 2016	Current week	Previous 52 weeks		Cum 2017	Cum 2016		Med	Max		
United States	3	3	10	116	102	52	74	249	3,174	2,690	108	530	668	15,678	17,538
New England	—	0	0	—	—	—	0	3	26	16	1	15	28	431	495
Connecticut	—	0	0	—	—	—	0	1	1	6	—	1	5	47	77
Maine	—	0	0	—	—	—	0	1	3	2	—	1	4	31	30
Massachusetts	—	0	0	—	—	—	0	3	18	6	—	10	22	304	295
New Hampshire	—	0	0	—	—	—	0	1	1	1	—	1	4	31	28
Rhode Island	—	0	0	—	—	—	0	2	2	1	1	0	18	10	53
Vermont	—	0	0	—	—	—	0	2	1	—	—	0	3	8	12
Mid. Atlantic	2	0	2	12	3	3	2	15	106	71	23	65	90	2,032	2,311
New Jersey	—	0	1	1	2	—	1	13	60	47	—	7	19	188	294
New York (Upstate)	2	0	2	10	—	2	0	11	17	5	16	10	31	342	298
New York City	—	0	1	1	1	1	0	2	8	7	3	33	50	1,009	1,232
Pennsylvania	—	0	0	—	—	—	0	3	21	12	4	15	35	493	487
E.N. Central	—	0	2	3	4	—	2	12	128	117	4	44	68	1,254	1,787
Illinois	—	0	2	2	1	—	1	8	53	47	—	15	36	327	792
Indiana	—	0	1	1	—	—	0	5	49	31	2	6	10	186	212
Michigan	—	0	0	—	2	—	0	2	3	8	—	6	17	160	232
Ohio	—	0	1	—	1	—	0	3	15	16	1	14	21	467	469
Wisconsin	—	0	0	—	—	—	0	2	8	15	1	3	18	114	82
W.N. Central	—	0	3	15	6	—	8	56	493	375	2	21	31	608	634
Iowa	—	0	0	—	—	—	0	1	5	9	—	2	5	51	46
Kansas	—	0	1	1	2	—	1	12	103	88	—	2	7	73	71
Minnesota	—	0	0	—	—	—	0	1	—	4	—	5	11	176	192
Missouri	—	0	2	9	3	—	6	42	367	246	—	8	14	262	255
Nebraska	—	0	1	2	—	—	0	2	8	22	2	1	4	23	40
North Dakota	—	0	1	1	—	—	0	2	8	1	—	0	3	15	22
South Dakota	—	0	1	2	1	—	0	1	2	5	—	0	3	8	8
S. Atlantic	—	1	5	55	65	4	12	43	554	604	15	119	154	3,650	4,193
Delaware	—	0	1	2	1	1	0	7	29	14	—	0	6	21	41
District of Columbia	—	0	0	—	—	—	0	1	2	3	—	3	13	107	103
Florida	—	0	2	3	3	—	0	4	14	4	5	46	63	1,418	1,549
Georgia	—	1	5	37	53	—	0	0	—	—	4	24	35	748	935
Maryland	—	0	2	8	—	—	0	3	16	—	1	8	18	246	337
North Carolina	—	0	1	1	5	—	7	28	303	349	—	19	33	582	706
South Carolina	—	0	2	3	2	—	1	6	31	27	3	6	16	218	202
Virginia	—	0	1	1	1	3	4	22	157	199	2	8	29	289	284
West Virginia	—	0	0	—	—	—	0	2	2	8	—	0	4	21	36
E.S. Central	—	0	4	10	6	11	21	85	1,012	899	—	25	36	696	788
Alabama	—	0	1	3	—	—	7	35	328	301	—	7	14	205	217
Kentucky	—	0	2	—	3	5	3	13	148	104	—	5	14	138	113
Mississippi	—	0	1	—	—	—	2	10	89	80	—	5	12	152	203
Tennessee	—	0	2	7	3	6	8	54	447	414	—	7	15	201	255
W.S. Central	1	0	6	8	5	34	18	142	829	574	38	60	78	1,893	1,911
Arkansas	—	0	1	5	5	27	15	60	705	528	1	3	11	108	93
Louisiana	—	0	0	—	—	—	0	2	1	8	—	13	30	364	442
Oklahoma	1	0	6	3	—	5	0	114	91	3	—	2	9	38	168
Texas	—	0	1	—	—	2	1	12	32	35	37	41	58	1,383	1,208
Mountain	—	0	3	11	12	—	0	3	17	21	1	35	57	1,045	1,065
Arizona	—	0	3	9	8	—	0	2	6	6	1	14	24	425	435
Colorado	—	0	0	—	—	—	0	1	2	1	—	4	14	120	156
Idaho	—	0	1	1	3	—	0	1	1	3	—	1	3	33	33
Montana	—	0	1	1	1	—	0	2	7	3	—	0	5	34	8
Nevada	—	0	0	—	—	—	0	1	—	4	—	9	25	295	243
New Mexico	—	0	0	—	—	—	0	1	1	—	—	3	11	86	117
Utah	—	0	0	—	—	—	0	1	—	3	—	1	6	48	71
Wyoming	—	0	0	—	—	—	0	0	—	1	—	0	1	4	2
Pacific	—	0	1	2	1	—	0	2	9	13	24	130	177	4,069	4,354
Alaska	N	0	0	N	N	N	0	0	N	N	—	0	1	4	5
California	—	0	1	1	1	—	0	1	5	9	11	115	161	3,612	3,689
Hawaii	N	0	0	N	N	N	0	0	N	N	—	1	6	50	71
Oregon	—	0	1	1	—	—	0	1	4	4	3	6	12	191	226
Washington	—	0	0	—	—	—	0	0	—	—	10	7	23	212	363
Territories															
American Samoa	N	0	0	N	N	N	0	0	N	N	—	0	0	—	—
C.N.M.I.	—	—	—	—	—	—	—	—	—	—	—	—	—	—	—
Guam	N	0	0	N	N	N	0	0	N	N	—	0	0	—	—
Puerto Rico	N	0	0	N	N	N	0	0	N	N	3	8	18	262	328
U.S. Virgin Islands	—	0	0	—	—	—	0	0	—	—	—	0	0	—	—

C.N.M.I.: Commonwealth of Northern Mariana Islands.

U: Unavailable. —: No reported cases. N: Not reportable. NN: Not Nationally Notifiable. NP: Nationally notifiable but not published. Cum: Cumulative year-to-date counts. Med: Median. Max: Maximum.

* Three low incidence conditions, rubella, rubella congenital, and tetanus, are in Table II to facilitate case count verification with reporting jurisdictions.

† Case counts for reporting years 2016 and 2017 are provisional and subject to change. For further information on interpretation of these data, see <http://www.cdc.gov/nndss/document/ProvisionalNationalNotifiableDiseasesSurveillanceData20100927.pdf>. Data for tuberculosis are displayed in Table III, which appears quarterly.

§ Illnesses with similar clinical presentation that result from Spotted Fever Group Rickettsia infections are reported as Spotted Fever Rickettsioses. Rocky Mountain Spotted Fever (RMSF), caused by *Rickettsia rickettsii*, is the most common and well-known Spotted Fever.

Morbidity and Mortality Weekly Report

TABLE II. (Continued) Provisional cases of selected notifiable diseases (≥1,000 cases reported during the preceding year), and selected* low frequency diseases, United States and U.S. territories, weeks ending August 19, 2017, and August 20, 2016 (33rd week)† (Export data)

Reporting area	Tetanus					Varicella (chickenpox)				
	Current week	Previous 52 weeks		Cum 2017	Cum 2016	Current week	Previous 52 weeks		Cum 2017	Cum 2016
		Med	Max				Med	Max		
United States	—	1	3	23	20	50	158	241	4,431	5,624
New England	—	0	1	1	—	5	14	25	454	573
Connecticut	—	0	0	—	—	—	2	5	62	79
Maine	—	0	1	1	—	4	4	10	124	139
Massachusetts	—	0	0	—	—	—	5	16	209	228
New Hampshire	—	0	0	—	—	—	0	4	—	60
Rhode Island	—	0	0	—	—	—	0	5	26	34
Vermont	—	0	0	—	—	1	1	5	33	33
Mid. Atlantic	—	0	1	2	4	8	19	38	589	672
New Jersey	—	0	0	—	—	—	8	23	256	259
New York (Upstate)	—	0	1	1	1	N	0	0	N	N
New York City	—	0	0	—	1	—	0	0	—	—
Pennsylvania	—	0	1	1	2	8	11	21	333	413
E.N. Central	—	0	1	2	2	7	35	56	1,028	1,300
Illinois	—	0	0	—	1	—	7	17	196	295
Indiana	—	0	1	—	—	—	4	10	114	127
Michigan	—	0	1	2	—	1	9	21	312	370
Ohio	—	0	1	—	1	5	8	23	260	272
Wisconsin	—	0	0	—	—	1	5	21	146	236
W.N. Central	—	0	1	2	—	—	14	29	373	501
Iowa	—	0	1	—	—	N	0	0	N	N
Kansas	—	0	1	1	—	—	0	11	—	121
Minnesota	—	0	0	—	—	—	6	23	241	210
Missouri	—	0	0	—	—	—	2	8	81	93
Nebraska	—	0	1	1	—	—	0	3	18	20
North Dakota	—	0	0	—	—	—	0	3	18	32
South Dakota	—	0	0	—	—	—	0	2	15	25
S. Atlantic	—	0	1	7	5	9	22	48	677	890
Delaware	—	0	0	—	—	—	0	3	11	7
District of Columbia	—	0	0	—	—	—	0	2	13	15
Florida	—	0	1	2	3	9	12	28	420	511
Georgia	—	0	0	—	—	—	4	18	132	108
Maryland	—	0	1	1	—	N	0	0	N	N
North Carolina	—	0	1	3	—	N	0	0	N	N
South Carolina	—	0	0	—	—	—	2	15	69	87
Virginia	—	0	1	1	1	—	2	15	32	162
West Virginia	—	0	0	—	1	—	0	0	—	—
E.S. Central	—	0	1	1	4	—	1	5	34	71
Alabama	—	0	1	1	1	—	1	5	29	67
Kentucky	—	0	1	—	1	N	0	0	N	N
Mississippi	—	0	0	—	1	—	0	2	5	4
Tennessee	—	0	0	—	1	N	0	0	N	N
W.S. Central	—	0	1	2	3	12	25	96	784	942
Arkansas	—	0	1	1	—	1	2	10	59	82
Louisiana	—	0	0	—	—	—	0	8	1	45
Oklahoma	—	0	0	—	1	N	0	0	N	N
Texas	—	0	1	1	2	11	23	91	724	815
Mountain	—	0	1	4	1	9	16	39	414	613
Arizona	—	0	0	—	1	7	4	13	112	172
Colorado	—	0	0	—	—	2	5	32	108	174
Idaho	—	0	1	1	—	N	0	0	N	N
Montana	—	0	1	1	—	—	0	8	23	51
Nevada	—	0	1	1	—	N	0	0	N	N
New Mexico	—	0	0	—	—	—	1	6	50	40
Utah	—	0	1	1	—	—	3	10	116	167
Wyoming	—	0	0	—	—	—	0	2	5	9
Pacific	—	0	1	2	1	—	2	6	78	62
Alaska	—	0	0	—	1	—	1	3	29	11
California	—	0	1	1	—	—	0	3	15	29
Hawaii	—	0	0	—	—	—	1	5	34	22
Oregon	—	0	1	1	—	N	0	0	N	N
Washington	—	0	0	—	—	N	0	0	N	N
Territories										
American Samoa	—	0	0	—	—	N	0	0	N	N
C.N.M.I.	—	—	—	—	—	—	—	—	—	—
Guam	—	0	0	—	—	—	0	5	—	7
Puerto Rico	—	0	0	—	—	—	1	5	20	55
U.S. Virgin Islands	—	0	0	—	—	—	0	0	—	—

C.N.M.I.: Commonwealth of Northern Mariana Islands.

U: Unavailable. —: No reported cases. N: Not reportable. NN: Not Nationally Notifiable. NP: Nationally notifiable but not published. Cum: Cumulative year-to-date counts. Med: Median. Max: Maximum.

* Three low incidence conditions, rubella, rubella congenital, and tetanus, are in Table II to facilitate case count verification with reporting jurisdictions.

† Case counts for reporting years 2016 and 2017 are provisional and subject to change. For further information on interpretation of these data, see <http://www.cdc.gov/nndss/document/ProvisionalNationalNotifiableDiseasesSurveillanceData20100927.pdf>. Data for tuberculosis are displayed in Table III, which appears quarterly.

Morbidity and Mortality Weekly Report

TABLE II. (Continued) Provisional cases of selected notifiable diseases (≥1,000 cases reported during the preceding year), and selected* low frequency diseases, United States and U.S. territories, weeks ending August 19, 2017, and August 20, 2016 (33rd week)[†] (Export data)

Reporting area	Vibriosis (Any species of the family <i>Vibrionaceae</i> , other than toxigenic <i>Vibrio cholerae</i> O1 or O139) [§]									
	Confirmed					Probable				
	Current week	Previous 52 weeks		Cum 2017	Cum 2016	Current week	Previous 52 weeks		Cum 2017	Cum 2016
	Med	Max				Med	Max			
United States	16	18	84	622	709	5	3	14	214	17
New England	1	1	13	66	57	—	0	2	6	2
Connecticut	1	0	4	22	11	—	0	2	6	—
Maine	—	0	2	4	2	—	0	0	—	—
Massachusetts	—	1	7	30	35	—	0	1	—	1
New Hampshire	—	0	1	4	4	—	0	0	—	1
Rhode Island	—	0	3	4	5	—	0	0	—	—
Vermont	—	0	1	2	—	—	0	0	—	—
Mid. Atlantic	2	2	8	63	69	—	0	3	17	5
New Jersey	—	0	2	13	21	—	0	2	10	—
New York (Upstate)	1	1	4	23	24	—	0	0	—	4
New York City	1	0	3	10	6	—	0	2	3	—
Pennsylvania	—	0	3	17	18	—	0	1	4	1
E.N. Central	1	1	5	36	49	—	0	3	29	—
Illinois	—	0	2	5	22	—	0	2	10	—
Indiana	—	0	2	4	8	—	0	0	—	—
Michigan	—	0	2	6	7	—	0	1	4	—
Ohio	1	0	3	14	5	—	0	3	7	—
Wisconsin	—	0	1	7	7	—	0	1	8	—
W.N. Central	—	0	2	10	28	—	0	3	20	6
Iowa	—	0	0	—	—	—	0	0	—	—
Kansas	—	0	1	—	3	—	0	1	1	—
Minnesota	—	0	2	—	16	—	0	3	—	5
Missouri	—	0	1	5	4	—	0	2	11	—
Nebraska	—	0	1	1	—	—	0	1	4	1
North Dakota	—	0	1	1	1	—	0	0	—	—
South Dakota	—	0	1	3	4	—	0	1	4	—
S. Atlantic	3	6	21	191	238	—	1	7	52	1
Delaware	1	0	3	3	8	—	0	0	—	—
District of Columbia	—	0	1	—	1	—	0	1	4	—
Florida	—	3	10	111	113	—	0	5	23	—
Georgia	—	0	2	14	18	—	0	0	—	—
Maryland	—	1	7	13	36	—	0	1	2	1
North Carolina	—	0	3	17	19	—	0	2	12	—
South Carolina	—	0	3	6	13	—	0	2	6	—
Virginia	2	0	5	27	30	—	0	2	5	—
West Virginia	—	0	1	—	—	—	0	0	—	—
E.S. Central	—	1	5	28	40	—	0	4	13	1
Alabama	—	0	4	10	19	—	0	1	3	—
Kentucky	—	0	1	1	5	—	0	2	4	—
Mississippi	—	0	2	11	7	—	0	0	—	—
Tennessee	—	0	2	6	9	—	0	2	6	1
W.S. Central	—	2	9	60	81	—	0	4	32	—
Arkansas	—	0	1	1	2	—	0	0	—	—
Louisiana	—	0	3	8	31	—	0	2	3	—
Oklahoma	—	0	2	3	1	—	0	1	2	—
Texas	—	2	8	48	47	—	0	4	27	—
Mountain	—	1	5	27	29	2	0	3	26	1
Arizona	—	0	3	6	8	—	0	1	7	—
Colorado	—	0	2	11	9	2	0	2	11	—
Idaho	—	0	0	—	—	—	0	0	—	—
Montana	—	0	1	5	2	—	0	1	1	—
Nevada	—	0	1	1	2	—	0	0	—	1
New Mexico	—	0	1	1	—	—	0	0	—	—
Utah	—	0	1	2	8	—	0	1	7	—
Wyoming	—	0	1	1	—	—	0	0	—	—
Pacific	9	3	63	141	118	3	0	3	19	1
Alaska	—	0	2	1	4	—	0	1	1	—
California	—	2	11	64	83	—	0	0	—	—
Hawaii	—	0	3	30	15	—	0	0	—	1
Oregon	—	0	3	12	16	3	0	1	11	—
Washington	9	0	62	34	—	—	0	2	7	—
Territories										
American Samoa	—	0	0	—	—	—	0	0	—	—
C.N.M.I.	—	—	—	—	—	—	—	—	—	—
Guam	—	0	0	—	—	—	0	0	—	—
Puerto Rico	—	0	0	—	—	—	0	0	—	—
U.S. Virgin Islands	—	0	0	—	—	—	0	0	—	—

C.N.M.I.: Commonwealth of Northern Mariana Islands.

U: Unavailable. —: No reported cases. N: Not reportable. NN: Not Nationally Notifiable. NP: Nationally notifiable but not published. Cum: Cumulative year-to-date counts. Med: Median.

Max: Maximum.

* Three low incidence conditions, rubella, rubella congenital, and tetanus, are in Table II to facilitate case count verification with reporting jurisdictions.

[†] Case counts for reporting years 2016 and 2017 are provisional and subject to change. For further information on interpretation of these data, see <http://www.cdc.gov/nndss/document/ProvisionalNationalNotifiableDiseasesSurveillanceData20100927.pdf>. Data for tuberculosis are displayed in Table III, which appears quarterly.

[§] The national surveillance case definition was revised in 2017 to include infections confirmed by culture-independent diagnostic tests as probable cases.

Morbidity and Mortality Weekly Report

TABLE II. (Continued) Provisional cases of selected notifiable diseases (≥1,000 cases reported during the preceding year), and selected* low frequency diseases, United States and U.S. territories, weeks ending August 19, 2017, and August 20, 2016 (33rd week)[†] (Export data)

Reporting area	West Nile virus disease [§]									
	Neuroinvasive					Nonneuroinvasive [¶]				
	Current week	Previous 52 weeks		Cum 2017	Cum 2016	Current week	Previous 52 weeks		Cum 2017	Cum 2016
	Med	Max				Med	Max			
United States	6	10	120	210	481	5	4	97	143	454
New England	—	0	3	—	3	—	0	2	—	2
Connecticut	—	0	1	—	—	—	0	0	—	—
Maine	—	0	0	—	—	—	0	0	—	—
Massachusetts	—	0	2	—	1	—	0	2	—	2
New Hampshire	—	0	0	—	—	—	0	0	—	—
Rhode Island	—	0	1	—	—	—	0	0	—	—
Vermont	—	0	0	—	2	—	0	0	—	—
Mid. Atlantic	—	0	8	3	7	—	0	2	2	3
New Jersey	—	0	1	—	4	—	0	0	—	—
New York (Upstate)	—	0	4	—	—	—	0	2	2	—
New York City	—	0	3	2	—	—	0	0	—	—
Pennsylvania	—	0	2	1	3	—	0	1	—	3
E.N. Central	—	0	30	6	46	—	0	14	5	16
Illinois	—	0	15	1	30	—	0	14	3	14
Indiana	—	0	4	3	2	—	0	1	—	—
Michigan	—	0	10	—	9	—	0	1	—	—
Ohio	—	0	3	—	3	—	0	2	2	2
Wisconsin	—	0	2	2	2	—	0	2	—	—
W.N. Central	—	0	19	30	63	—	0	48	59	213
Iowa	—	0	3	2	3	—	0	5	1	4
Kansas	—	0	3	1	10	—	0	2	3	10
Minnesota	—	0	3	2	10	—	0	19	7	30
Missouri	—	0	3	3	3	—	0	1	—	1
Nebraska	—	0	7	4	12	—	0	5	11	35
North Dakota	—	0	6	6	11	—	0	11	17	41
South Dakota	—	0	8	12	14	—	0	16	20	92
S. Atlantic	—	0	4	14	18	—	0	2	4	6
Delaware	—	0	0	—	—	—	0	0	—	—
District of Columbia	—	0	0	—	1	—	0	0	—	—
Florida	—	0	1	—	5	—	0	0	—	2
Georgia	—	0	3	10	1	—	0	1	3	1
Maryland	—	0	1	—	4	—	0	0	—	—
North Carolina	—	0	0	—	2	—	0	0	—	—
South Carolina	—	0	2	1	4	—	0	2	1	2
Virginia	—	0	2	3	1	—	0	1	—	1
West Virginia	—	0	0	—	—	—	0	1	—	—
E.S. Central	2	0	9	36	21	1	0	5	11	12
Alabama	—	0	1	1	4	—	0	1	1	2
Kentucky	—	0	1	1	2	—	0	1	—	2
Mississippi	—	0	7	29	14	—	0	2	7	6
Tennessee	2	0	2	5	1	1	0	1	3	2
W.S. Central	4	2	23	40	77	3	1	12	29	44
Arkansas	—	0	3	3	1	—	0	2	3	1
Louisiana	—	0	7	15	13	—	0	3	5	6
Oklahoma	—	0	2	4	8	—	0	2	3	9
Texas	4	1	19	18	55	3	1	10	18	28
Mountain	—	1	18	52	73	1	0	20	19	87
Arizona	—	0	9	32	28	—	0	2	5	13
Colorado	—	0	9	5	30	—	0	16	1	61
Idaho	—	0	1	1	1	1	0	2	1	2
Montana	—	0	1	1	1	—	0	1	4	3
Nevada	—	0	2	7	5	—	0	3	7	3
New Mexico	—	0	3	6	1	—	0	0	—	—
Utah	—	0	3	—	3	—	0	2	—	2
Wyoming	—	0	2	—	4	—	0	1	1	3
Pacific	—	0	39	29	173	—	0	11	14	71
Alaska	—	0	0	—	—	—	0	0	—	—
California	—	0	38	29	167	—	0	11	12	69
Hawaii	—	0	0	—	—	—	0	0	—	—
Oregon	—	0	1	—	—	—	0	1	1	1
Washington	—	0	3	—	6	—	0	1	1	1
Territories										
American Samoa	—	0	0	—	—	—	0	0	—	—
C.N.M.I.	—	—	—	—	—	—	—	—	—	—
Guam	—	0	0	—	—	—	0	0	—	—
Puerto Rico	—	0	0	—	—	—	0	0	—	—
U.S. Virgin Islands	—	0	0	—	—	—	0	0	—	—

C.N.M.I.: Commonwealth of Northern Mariana Islands.

U: Unavailable. —: No reported cases. N: Not reportable. NN: Not Nationally Notifiable. NP: Nationally notifiable but not published. Cum: Cumulative year-to-date counts. Med: Median.

Max: Maximum.

* Three low incidence conditions, rubella, rubella congenital, and tetanus, are in Table II to facilitate case count verification with reporting jurisdictions.

[†] Case counts for reporting years 2016 and 2017 are provisional and subject to change. For further information on interpretation of these data, see <http://www.cdc.gov/nndss/document/ProvisionalNationalNotifiableDiseasesSurveillanceData20100927.pdf>. Data for tuberculosis are displayed in Table III, which appears quarterly.

[§] Updated weekly from the Division of Vector-Borne Diseases, National Center for Emerging and Zoonotic Infectious Diseases (ArboNET Surveillance). Data for Jamestown Canyon virus, La Crosse virus, Chikungunya virus, Eastern equine encephalitis virus, Powassan virus, St. Louis virus, and Western equine encephalitis virus diseases are available in Table I.

[¶] Not reportable in all states. Reporting exceptions are available at <http://www.cdc.gov/nndss/downloads.html>.